

## Why Do I Need a Safety Cabinet?

One of the leading causes of industrial fires is the improper storage and handling of flammable liquids. Safety cabinets help you safely store fuels, chemicals, and solvents to reduce the risk of fire and protect your people and property.

### Safety cabinets serve critical functions:

- Improve awareness—high-visibility cabinet color and prominent labeling identify potentially hazardous chemicals
- Keep dangerous liquids safely organized and segregated
- Ensure safe evacuation time in the event of a fire
- Provide compliance with federal OSHA regulations and the National Fire Protection Association
- Increase maximum allowable quantities of flammable and combustible liquids in control areas
- Improve efficiency by locating materials near point-of-use
- Improve security with locking mechanism



## Considerations when selecting a safety cabinet

- Federal, state, and local compliance requirements
- Size and type of container being stored
- Capacity needed
- Type of chemical being stored
- Security and safety features such as U-Loc™ padlockable handle, SpillSlope® shelves, Haz-Alert™ warning labels, all welded construction

Also look for cabinets that carry independent, third party certification from FM Approvals (FM-approved) or MPA Dresden (GS). These marks signify the cabinet will perform as expected and support property loss prevention.



## Compliance

Each Justrite steel safety cabinet meets at least one or more of the following regulations:

- OSHA 1910.106
- National Fire Protection Association (NFPA) Flammable Liquid Code 30
- NFPA Fire Code 1
- International Fire Code (IFC)
- National Fire Code of Canada
- NFPA Hazardous Materials Code 400
- European EN standard 14470-1 and 14727

Most cabinets are FM approved and all are backed by an industry-first, ten-year warranty.



While regulatory codes do not mandate the specific color for a safety cabinet, industry has customarily observed certain colors for defined liquids.

<b>Yellow for flammable liquids</b>	<b>Green for pesticides and insecticides</b>
<b>Red for paints, inks, and other combustible liquids</b>	<b>Silver or neutral colors for laboratory settings</b>
<b>Blue for corrosives and hazardous liquids</b>	<b>White, beige or gray for waste or outdoor lockers</b>

Regulations do, however, specify construction details and the type of door style required

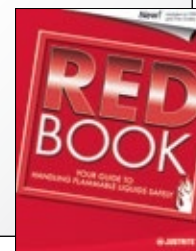
Code	Flammable Safety Cabinet Door Styles
NFPA 30 and NFPA 1, 2012 ed	Permits either manual or self-close doors
IFC	Mandates use of self-close doors only
NFPA 400	Mandates use of self-close doors only

**Contact local jurisdictions for specific requirements.**

## Safety expertise since 1906

With over 300 models ranging in capacities from 4- to 115-gallons (15- to 435-liters), you can be assured of getting the highest protection, convenience, and durability in a safety cabinet that meets your specific need. If you don't find what you want, ask about our Custom Cabinet Program offering you the ability to design to your own specifications.

Use safety cabinets to keep your people and facility safe from a devastating fire. Get details on regulations, our cabinets and other products—visit our website to request a copy of our popular RedBook™... *Your Guide to Handling Flammable Liquids Safely.*



Justrite® Sure-Grip® EX Safety Storage Cabinets offer top performance for flammable liquid storage and protection.

## EXtra safe, EXtra sturdy, EXtra secure

Fusible links hold doors wide open and melt at 165°F (74°C) for automatic closure (on self-closing models).

Sturdy 18-gauge (1-mm) double wall steel construction with 1-1/2-in (38-mm) of insulating air space.

Easy-close, self-latching doors; U-Loc™ handle (shown below) does not require manual rotation to engage mandatory three-point latch.

Fully welded, not riveted, construction holds squareness for longer life and offers greater protection in a fire since air gaps are reduced.

Continuous piano hinge provides smooth closure.

Durable and chemical-resistant, lead-free powder-coat paint finish, inside and out, retains high gloss look and minimizes the effects of corrosion and humidity.

Dual vents with built-in flash arresters strategically placed at bottom and opposite top.



45-gallon (170-liter) self-close door style

Concealed self-close mechanism provides obstruction-free access to top shelf space. Self-indexing doors guarantee they will close in sequence and ensure a tight closure from top to bottom (on self-closing models). Patent pending

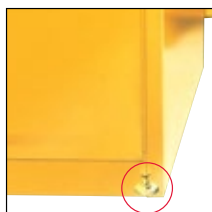
Patented SpillSlope® safety shelves direct spills to back and bottom of leakproof sump. Adjustable on 3-in (76-mm) centers, they meet ANSI standards with a 350-lb (159-kg) safe allowable load.

Welded shelf hangers interlock with shelf to offer maximum "non-slip" stability with no flimsy brackets to lose.

2-in (51-mm) leakproof containment sump holds leaks and meets EPA requirements.



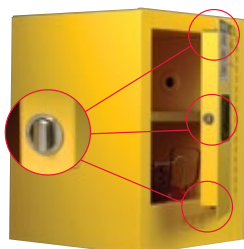
Complies with OSHA 29 CFR 1910.106 and NFPA Code 30, section 9.5.3; FM Approved



Adjustable leveling feet make it easy to balance cabinets on uneven surfaces.



Built-in grounding connector (on outside side panel) for easy grounding. Shown here with optional ground wire 08500.



Stainless steel, 3-point bullet self-latching system provides easy, fail-safe, positive door closure with increased heat resistance. Patent pending



Easily secure your contents—U-Loc™ handle includes double key set or can be padlocked (not included) for greater security. Patent pending



Patented SpillSlope® safety shelves direct spills to back and bottom of leakproof sump; adjust on 3-in (76-mm) centers for versatile storage. Meets ANSI MH28.1



Welded construction holds squareness for long life; door astragal provides extra sturdiness.



Highly visible HazAlert™ reflective label provides warning—"Flammable – Keep Fire Away" in English, Spanish, and French.



Using multiple cabinets helps you organize and segregate dangerous liquids.

## Sure-Grip® EX Classic Safety Cabinets

Safe, dependable flammable liquid storage and protection

- Independently fire tested and approved by FM Approvals.
- Avoid fines—meet regulations, fire codes, and insurance requirements.

Protect workers, reduce fire risks, and improve productivity by storing flammable fuels and chemicals in code-compliant safety cabinets. Designed to meet OSHA and NFPA 30 standards, Sure-Grip® EX cabinets are constructed of sturdy 18-gauge (1-mm) thick double-wall, welded steel with 1-1/2-in (38-mm) of insulating air space for fire resistance. High-performance, self-latching doors close easily and securely for maximum protection under fire conditions. Fail-safe closing mechanism ensures three-point stainless steel bullet latching system works every time.

For added security, U-Loc™ handle comes with a cylinder lock and key set or accepts an optional padlock. Haz-Alert™ reflective warning labels are highly visible under fire conditions or during power outages when illuminated with a flashlight.

Patented SpillSlope® galvanized steel shelves direct spills to back and bottom of a leakproof sump. They adjust on 3-in (76-mm) centers for versatile storage. Cabinets also feature a leakproof 2-in (51-mm) bottom sump, dual vents with flame arresters, four adjustable self-leveling feet, grounding connector and trilingual warning label. Durable powder-coat finish provides excellent chemical resistance.

Self-closing models also meet the International Fire Code. They shut and latch automatically when a fusible link melts at 165°F (74°C) under fire conditions. Unique, concealed self-closing mechanism offers obstruction-free access to contents. All cabinets are backed by a ten-year warranty.



### Global Protection

Justrite products are available worldwide. For pricing and availability, simply contact the authorized distributor nearest you.



894500



894520



893000



896000

Capacity Gallons/Liters	Number of Doors and Style	Dimensions H x W x D		Adjustable Shelves	Approv/Lstg Regulation	Sure-Grip® Model No	Ship Wt lb/kg
		Exterior	Interior				
30/114	2 door, manual	44 x 43 x 18 in	39.625 x 39.5 x 14.562 in	1	FM,N,O,A	893000	231/105
	2 door, self-close	1118 x 1092 x 457 mm	1006 x 1003 x 370 mm		FM,N,O,A,I	893020	238/108
45/170	2 door, manual	65 x 43 x 18 in	60.5 x 39.5 x 14.562 in	2	FM,N,O,A	894500	311/141
	2 door, self-close	1651 x 1092 x 457 mm	1537 x 1003 x 370 mm		FM,N,O,A,I	894520	313/142
60/227	2 door, manual	65 x 34 x 34 in	60.5 x 30.75 x 30.34 in		FM,N,O,A,I	896000	388/176
	2 door, self-close	1651 x 864 x 864 mm	1537 x 781 x 771 mm		FM,N,O,A,I	896020	392/178
90/341*	2 door, manual	65 x 43 x 34 in	60.5 x 39.5 x 30.34 in	FM,N,O,A	899000	481/218	
	2 door, self-close	1651 x 1092 x 864 mm	1537 x 1003 x 771 mm	FM,N,O,A,I	899020		

\*OSHA 29CFR 1910.106(d)(3) states that not more than 60 gallons (227L) of Category 1, 2, or 3 flammable liquids, nor more than 120 gallons (454L) of Category 4 flammable liquids may be stored in a safety cabinet.

### Extra Accessories

Description	Fits Cabinet Styles	Dimensions W x D	Model No	Ship Wt lb/kg
SpillSlope® steel shelf	30 & 45 gallon (114 & 170 L) - 43 in W (1092 mm)	39.375 x 14 in (1000 x 356 mm)	29937	10/5
SpillSlope® steel shelf	30 gallon (114 L) - 36 in W (914 mm)	32.375 x 20 in (822 x 508 mm)	29942	12/5
SpillSlope® steel shelf	60 gallon (227 L) - 34 in W (864 mm)	30.375 x 29 in (771 x 737 mm)	29944	16/7
SpillSlope® steel shelf	90 gallon (341 L) - 43 in W (1092 mm)	39.375 x 29 in (1000 x 737 mm)	29945	21/9





Self-latching doors require a simple push to securely activate the three-point latch.

## Sure-Grip® EX Safety Cabinets—Optional Colors

Follow company-established color coding practices

Using color coding in your storage practices helps identify, organize, and segregate liquids—see page 6 for more details. These cabinets in red, gray, and white have all the same safety benefits and high performance features found in Justrite’s classic-style yellow cabinets for the storage of flammable fuels and chemicals.

For extra shelves, see page 8.



893001



893003



893005



Capacity Gal/L	Number of Doors and Style	Dimensions H x W x D		Adjustable Shelves	Approv/Lstg Regulation	Red Model No	Gray Model No	White Model No	Ship Wt lb/kg
		Exterior	Interior						
30/114	2 door, manual	44 x 43 x 18 in	39.625 x 39.5 x 14.562 in	1	FM,N,O,A	893001	893003	893005	232/105
	2 door, self-close	1118 x 1092 x 457 mm	1006 x 1003 x 370 mm			893021	893023	893025	236/107
	2 door, manual	35 x 36 x 24 in	30.625 x 32.625 x 21.75 in			893301	893303	893305	213/97
45/170	2 door, manual	65 x 43 x 18 in	60.5 x 39.5 x 14.562 in	2	FM,N,O,A	894501	894503	894505	299/136
	2 door, self-close	1651 x 1092 x 457 mm	1537 x 1003 x 370 mm			894521	894523	894525	301/137
60/227	2 door, manual	65 x 34 x 34 in	60.5 x 30.75 x 30.34 in	2	FM,N,O,A	896001	896003	896005	386/175
	2 door, self-close	1651 x 864 x 864 mm	1537 x 781 x 771 mm			896021	896023	896025	394/179
90/341*	2 door, manual	65 x 43 x 34 in	60.5 x 39.5 x 30.34 in	2	FM,N,O,A	899001	899003	899005	450/204
	2 door, self-close	1651 x 1092 x 864 mm	1537 x 1003 x 771 mm			899021	899023	899025	454/206

\*OSHA 29CFR 1910.106(d)(3) states that not more than 60 gallons (227L) of Category 1, 2, or 3 flammable liquids, nor more than 120 gallons (454L) of Category 4 flammable liquids may be stored in a safety cabinet.

## Sure-Grip® EX Safety Cabinets—Single Door

Full size, full storage capacity safety cabinets with a unique single-door design

These cabinets have all the same features and benefits as Justrite’s popular classic-style safety cabinets, with one convenient bi-fold, sliding door. Self latching and self closing, it is equipped with a fusible link to hold the door open during use and melts at 165°F (74°C) to automatically close under fire conditions. Heavy-duty steel dual-track guidance system at top and bottom ensures smooth closure. Industrial-strength spring-loaded piano hinge provides long lasting operation.



893080



Capacity Gal/L	Number of Doors and Style	Dimensions H x W x D		Adj Shelves	Approv/Lstg Regulation	Yellow Model No	Red Model No	Gray Model No	White Model No	Ship Wt lb/kg
		Exterior	Interior							
30/114	1 bi-fold sliding self-close	44 x 43 x 18 in	39.625 x 39.5 x 14.562 in	1	FM,N,O,A,I	893080	—	—	—	246/116
45/170	1 bi-fold sliding, self-close	65 x 43 x 18 in	60.5 x 39.5 x 14.562 in	2		894580	894581	—	—	320/145
		1651 x 1092 x 457 mm	1537 x 1003 x 370 mm			896080	896081	—	—	394/179
60/227	1 bi-fold sliding, self-close	65 x 34 x 34 in	60.5 x 30.75 x 30.34 in	2		899080	—	—	—	454/206
90/341*	1 bi-fold sliding, self-close	1651 x 864 x 864 mm	1537 x 781 x 771 mm		899080	—	—	—	454/206	

\*OSHA 29CFR 1910.106(d)(3) states that not more than 60 gallons (227L) of Category 1, 2, or 3 flammable liquids, nor more than 120 gallons (454L) of Category 4 flammable liquids may be stored in a safety cabinet.



Place Slimline cabinet where floor space is limited.

## Sure-Grip® EX Slimline Safety Cabinets

Gain valuable storage space even when floor space is tight

- Welded, 18-gauge (1-mm) steel double wall with 1-1/2-in (38-mm) insulating air space.
- U-Loc™ handle comes with double key set and accepts optional padlock for added security.

Fully compliant cabinets with compact design feature fire-resistant construction for the safe storage of flammable and combustible liquids. Use alone or alongside larger safety cabinets for expanded storage when floor space is limited. The standard Slimline cabinet is 18-in (457-mm) deep and fits flush alongside a 45-gallon (170-L) cabinet. The deep Slimline cabinet is 34-in (864-mm) deep and fits alongside a 60- or 90-gallon (227- or 341-L) cabinet. Both cabinets measure only 23-1/4-in (591-mm) wide.



Use color coding in your storage practices to organize and segregate liquids.

Slimline safety cabinets have all the same features as the larger safety cabinets including, a three-point, self-latching door with self-latching handle, a 2-in (51-mm) leakproof sump, and dual vents with integral flame arresters. Built-in grounding connector allows for proper grounding to reduce static build-up. Cabinets include three SpillSlope® galvanized steel shelves that direct spills to back and bottom into a 2-in (51-mm) leakproof sump. Under fire conditions when illuminated by a flashlight, highly reflective Haz-Alert™ warning labels shine brightly to alert emergency personnel to volatile contents.

Cabinets meet NFPA and OSHA regulations and are FM-approved. Self-closing models also comply with the International Fire Code.



892200

895400



Small cabinet footprint fits in the tightest spaces.



When additional storage space is needed, modular size fits nicely alongside existing cabinets.



Capacity Gal/L	Number of Doors and Style	Dimensions H x W x D		Adj Shelves	Approval/Lstg Regulation	Yellow Model No	Red Model No	Gray Model No	White Model No	Ship Wt lb/kg
		Exterior	Interior							
22/83 (standard)	1 door, manual	65 x 23.25 x 18 in	60.5 x 20 x 14.56 in	3	FM,N,O,A	892200	892201	892203	892205	208/94
	1 door, self-close	1651 x 591 x 457 mm	1537 x 508 x 370 mm		FM,N,O,A,I	892220	892221	892223	892225	210/95
54/204 (deep)	1 door, manual	65 x 23.25 x 34 in	60.5 x 20 x 30.34 in		FM,N,O,A	895400	895401	895403	895405	298/135
	1 door, self-close	1651 x 591 x 864 mm	1537 x 508 x 771 mm		FM,N,O,A,I	895420	895421	895423	895425	314/142

**Extra Accessories**

Description	Fits Cabinet Styles	Dimensions W x D	Model No	Ship Wt lb/kg
SpillSlope® steel shelf	22 Gallon (83 L) Slimline	19.625 x 14 in (498 x 356 mm)	29936	6/3
SpillSlope® steel shelf	54 Gallon (204 L) Deep slimline	19.625 x 29 in (498 x 737 mm)	29941	11/5

## Sure-Grip® EX Piggyback Safety Cabinets

Expand storage and safely segregate liquids

- Easily add up to 17-gallons (64-L) of additional capacity to existing cabinets.
- Fully compliant, fire-resistant design reduces the risk of fire.

Create a safe storage area for fuels, chemicals, or solvents without taking up valuable floor space. Piggyback cabinets are designed to mount on top of 30- and 45-gallon (114- and 170-L), manual or self-closing Sure-Grip® EX cabinets. They can also be used independently as a benchtop cabinet or stacked to provide additional storage. Turn it into a wall-mount cabinet with optional wall hanger assembly No. 25950.

The Piggyback cabinets have a lower-height, but offer the same protection as Justrite's taller safety cabinets. Constructed of sturdy 18-gauge (1-mm) thick double-wall, welded steel, they feature 3-point, self-latching doors that close easily and securely for maximum protection under fire conditions. Leakproof 2-in (51-mm) captures dangerous spills. U-Loc™ handle includes double key set and accepts optional padlock for increased security.

Cabinets meet NFPA and OSHA regulations and are FM-approved. Self-closing models also comply with the International Fire Code.



Piggyback cabinets can be stacked on each other or taller cabinets for better organization of liquids.



891300 on top of 893000



**Instant access to safety data sheets . . .**

Document storage boxes keep important papers clean, legible, and at employee's fingertips—see page 36 for a variety of styles.



891300



891700



**Global Protection**  
Justrite products are available worldwide. For pricing and availability, simply contact the authorized distributor nearest you.



Capacity Gal/L	Number of Doors and Style	Dimensions H x W x D		Adj Shelves	Approv/Lstg Regulation	Yellow Model No	Red Model No	Gray Model No	White Model No	Ship Wt lb/kg
		Exterior	Interior							
12/45	2 door, manual	18 x 43 x 18 in	13 x 39.5 x 14.56 in	0	FM,N,O,A	891300	891301	891303	891305	129/59
	2 door, self-close	457 x 1092 x 457 mm	330 x 1003 x 370 mm		FM,N,O,A,I	891320	891321	891323	891325	131/59
17/64	2 door, manual	24 x 43 x 18 in	19.5 x 39.5 x 14.56 in	1	FM,N,O,A	891700	891701	891703	891705	166/75
	2 door, self-close	610 x 1092 x 457 mm	495 x 1003 x 370 mm		FM,N,O,A,I	891720	891721	891723	891725	169/77

**Extra Accessories**

Description	Fits Cabinet Styles	Dimensions W x D	Model No	Ship Wt lb/kg
SpillSlope® steel shelf	17 Gallon (64 L) piggyback	39.375 x 14 in (1000 x 356 mm)	29937	10/5
Wall hanger assembly (mounting kit)	12 & 17 Gallon (45 L & 64 L) piggyback cabinets	—	25950	5/2



Place cabinets near points-of-use to save time by not going to a far away central storage area.

### Sure-Grip® EX Countertop Safety Cabinets

*Use on workbenches for easy access to often-used liquids*

Get the fire protection found in larger sized Justrite® safety cabinets in a compact design measuring only 22-in (559-mm) high. Use these cabinets when storing lesser quantities of flammable liquids at a workstation. Portable size keeps work areas flexible. Includes one SpillSlope® safety shelf for storage of multiple small containers. Self-close model with concealed closing mechanism utilizes entire internal space for storage. For more countertop space, choose optional wall hanger assembly for easy mounting on a wall.



890400



Capacity Gal/L	Number of Doors and Style	Dimensions H x W x D		Adj Shelves	Approv/Lstg Regulation	Yellow Model No	Red Model No	Gray Model No	White Model No	Ship Wt lb/kg
		Exterior	Interior							
4/15	countertop; 1 door, manual	22 x 17 x 17 in	18.5 x 13.75 x 13.75 in	1	N,O,A	890400	890401	890403	890405	67/30
	countertop; 1 door self-close	559 x 432 x 432 mm	470 x 349 x 349 mm		N,O,A,I	890420	890421	890423	890425	68/31

**Extra Accessories**

Description	Fits Cabinet Styles	Dimensions W x D	Model No	Ship Wt lb/kg
SpillSlope® steel shelf	For 4 gallon (15 L) cabinet	13.375 x 13 in (340 x 330 mm)	29935	4/2
Wall hanger assembly (mounting kit)	4 Gallon (15 L) compac cabinets	—	25951	4/2



891200

### Sure-Grip® EX Compac Safety Cabinets

*FM-approved safe storage for up to 15-gallons (57-liters) of flammable liquids*

Fully compliant, compact-sized cabinets fit almost anywhere and provide protection even when space is at a premium. Popular 12-gal (45-L) size measures 35-in (889-mm) high to fit under most workbenches. Fire resistant design includes double-walled steel construction with 1-1/2-in (38-mm) of insulating air space and 3-point stainless steel bullet latch for fail-safe, positive door closure. Adjustable SpillSlope® safety shelf directs spills to back and bottom of leakproof 2-in (51-mm) sump. U-Loc™ handle comes with double key set and accepts optional padlock for security. Cabinets also feature dual vents with flame arresters, adjustable leveling feet, and grounding connector to prevent static build-up.

Cabinets meet NFPA and OSHA regulations and are FM-approved. Self-closing models also comply with the International Fire Code.



Capacity Gal/L	Number of Doors and Style	Dimensions H x W x D		Adj Shelves	Approv/Lstg Regulation	Yellow Model No	Red Model No	Gray Model No	White Model No	Ship Wt lb/kg
		Exterior	Interior							
12/45	compac; 1 door manual	35 x 23.25 x 18 in	30.5 x 20 x 14.56 in	1	FM,N,O,A	891200	891201	891203	891205	133/60
	compac; 1 door self-close	889 x 591 x 457 mm	775 x 508 x 370 mm		FM,N,O,A,I	891220	891221	891223	891225	134/61
15/57	compac; 1 door manual	44 x 23.25 x 18 in	39.625 x 20 x 14.56 in		FM,N,O,A	891500	891501	891503	891505	154/70
	compac; 1 door self-close	1118 x 591 x 457 mm	1006 x 508 x 370 mm		FM,N,O,A,I	891520	891521	891523	891525	156/71

**Extra Accessories**

Description	Fits Cabinet Styles	Dimensions W x D	Model No	Ship Wt lb/kg
SpillSlope® steel shelf	12 & 15 gallon (45 L & 57 L) cabinets	19.625 x 14 in (498 x 356 mm)	29936	6/3



### Mini Safety Cabinet

*Safe flammable storage even when space is at a minimum*

- *Small footprint—place cabinet within quick reach.*
- *Maximize cabinet space with an adjustable shelf.*

Keep most often used flammables for cleaning and maintenance within easy reach. Mini Safety Cabinet only measures 17-in (432-mm) wide x 8-in (203-mm) deep yet has the same great features as our larger cabinets—double-wall construction, 3-point latch, leakproof sump, U-Loc™ handle with double key set, and chemical-resistant powder-coat finish. Three bungee cords keep contents in place when transporting.



Easily relocate Mini Safety Cabinet to different locations throughout your facility.



890200



**Global Protection**  
 Justrite products are available worldwide. For pricing and availability, simply contact the authorized distributor nearest you.

**10 Year**  
 Limited Warranty

Capacity Gallons/Liters	Number of Doors and Style	Dimensions H x W x D		Adjustable Shelves	Approv/Lstg Regulation	Sure-Grip® Model No	Ship Wt lb/kg
		Exterior	Interior				
Aerosols	mini; 1 door, manual	22 x 17 x 8 in 559 x 432 x 203 mm	12.25 x 13.75 x 4.75 in 309 x 350 x 121 mm	1	N,O,A	890200	43/19

### Aerosol Can Benchtop Safety Cabinet

*Place anywhere for hassle-free organization of aerosol cans*

- *Two roll-out shelves fit up to 24 aerosol cans.*
- *Welded, 18-gauge (1-mm) steel double-wall with 1-1/2-in (38-mm) insulating air space.*

Designed to store aerosol cans, cabinet features 24-gauge (0.6-mm) galvanized steel roll-out shelves with “easy-glide” plastic rollers and stop guard protection. Each shelf comes with an insert that holds twelve 2-3/4-in (70-mm) diameter x 10-in (254-mm) tall cans. Inserts are removable for easy cleaning. Small in size yet the aerosol cabinet has safety features found in our larger cabinets—double-wall construction, 3-point latch, U-Loc™ handle with double key set, and chemical-resistant paint finish.

Cabinet meets NFPA and OSHA regulations.



890500

**10 Year**  
 Limited Warranty

Capacity	Dimensions H x W x D		Roll-out Shelves	Approv/Lstg Regulation	Model No	Ship Wt lb/kg
	Exterior	Interior				
24 cans	27 x 21 x 18 in 686 x 533 x 457 mm	23.375 x 17.75 x 14.75 in 594 x 451 x 375 mm	2	N,O,A	890500	99/45



Shelves roll out for easy access.

**Have larger quantities of aerosol cans?**  
 Safely store up to 128 aerosol cans in our Wall-Mount Aerosol Can Cabinet ... see page 24.







Conveniently locate liquids near work areas.

**Sure-Grip® EX Undercounter Safety Cabinets**

*Conveniently locate liquids near work areas*

- *Back wall vents with flame arresters permit venting if needed.*
- *Recessed toe kick improves ergonomics, mounts flush with other cabinetry.*

Take advantage of undercounter space to safely store flammable liquids. Each cabinet is sized and fitted with a recessed 3-1/2-in H x 2-1/2-in D (89-mm x 64-mm) toe kick to allow the user to stand closer to the work surface, which means less leaning and better ergonomics. Fully compliant to NFPA and OSHA regulations, cabinets feature all-welded 18-gauge (1-mm) double-wall steel construction with 1-1/2-in (38-mm) insulating air space for fire resistance. Adjustable SpillSlope® shelf directs any spills to back and bottom of a leakproof 2-in (51-mm) sump. Three-point stainless steel bullet latch provides fail-safe, positive door closure. Flush-mounted U-Loc™ handle comes with double key set and accepts optional padlock for added security. Self-leveling feet adjust to 1-1/8-in (29-mm) for alignment on uneven floors. When fully extended, cabinet heights raise 5/8-in (16-mm).



Capacity Gal/L	Number of Doors and Style	Dimensions H x W x D		Adj Shelves	Approv/Lstg Regulation	Yellow Model No	Red Model No	Gray Model No	White Model No	Ship Wt lb/kg
		Exterior	Interior							
22/83	2 door, manual	35 x 35 x 22 in	27.31 x 31.75 x 18.75 in	1	FM,N,O,A	892300	892301	892303	892305	192/87
	2 door, self-close	889 x 889 x 559 mm	695 x 806 x 476 mm		FM,N,O,A,I	892320	892321	892323	892325	194/88

**Extra Accessories**

Description	Fits Cabinet Styles	Dimensions W x D	Model No	Ship Wt lb/kg
SpillSlope® steel shelf	22 Gallon (83 L) undercounter cabinet	31.56 x 18 in (802 x 457 mm)	29939	10/5



*Global Protection  
Justrite products are available worldwide.  
For pricing and availability, simply contact  
the authorized distributor nearest you.*



**Sure-Grip® EX Wall-Mount Safety Cabinets**

*Make the most of usable storage space—hang cabinet above workbench for easy access*

Gain storage space near work areas without taking up extra floor space. Eye-level positioning allows for easy access to solvents. Cabinets offer the same protection as Justrite's larger cabinets—including double-walled construction, 3-point self latching doors, leakproof sump, dual vents with flame arresters, grounding connector, and SpillSlope® safety shelving. Models come complete with mounting hardware.



Capacity Gallons/Liters	Number of Doors and Style	Dimensions H x W x D		Adjustable Shelves	Approv/Lstg Regulation	Sure-Grip® Model No	Ship Wt lb/kg
		Exterior	Interior				
17/64	2 door, manual	24 x 43 x 18 in	19.5 x 39.5 x 14.56 in	1	N,O,A	8917008	153/69
20/76		610 x 1092 x 457 mm	495 x 1003 x 370 mm				
		44 x 43 x 12 in	39.56 x 39.5 x 8.75 in	3	FM,N,O,A	893400	224/102
		1118 x 1092 x 305 mm	1006 x 1003 x 222 mm				

**Extra Accessories**

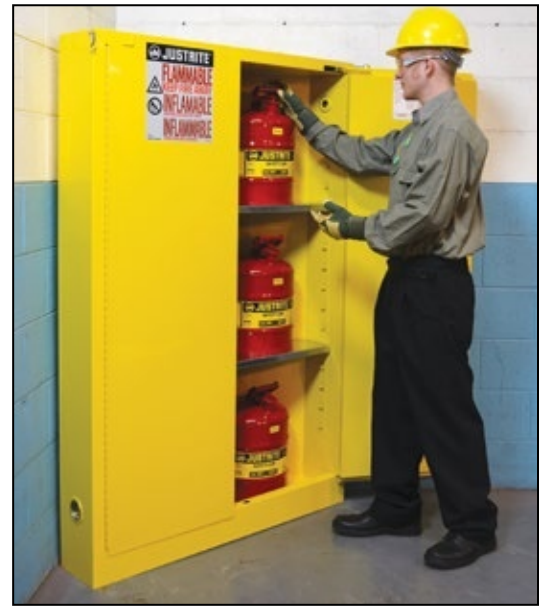
Description	Fits Cabinet Styles	Dimensions W x D	Model No	Ship Wt lb/kg
SpillSlope® steel shelf	17 Gallon (64 L) wallmount cabinet	39.375 x 14 in (1000 x 356 mm)	29937	10/5
SpillSlope® steel shelf	20 Gallon (76 L) wallmount cabinet	39.375 x 8.625 in (1000 x 219 mm)	29938	7/3

## Sure-Grip® EX Corner Safety Cabinet **NEW**

*Maximize corner space while retaining full storage capacity*

Designed especially for environments where space is at a minimum, this cabinet fits nicely into an empty corner to maximize the amount of space available for storage. Improve efficiency by locating materials near point-of-use and get the most out of limited floor space. Available in 30- (114-L) and 45-gallon (170-L) capacities, with both manual and self-closing door styles, Sure-Grip® EX corner safety cabinets help to increase maximum allowable quantities of flammable and combustible liquids in control areas.

Designed to meet OSHA, NFPA 30, and NFPA 1 standards, corner safety cabinets have many of the same features as the classic line of flammable safety cabinets including a fail-safe, three-point self latching door, double-walled construction with 1-1/2-in (38-mm) air space, dual vents, a grounding connector and a large trilingual warning label identifying contents. A leakproof 2-in (51-mm) sump captures dangerous spills.



Safely store nine 5-gal (19 L) safety cans with room to spare.



**Storing hazardous materials?**  
Identify and safely store acids, bases, oxidizers, or toxic materials — see pages 26-27 for a wide variety of cabinet sizes.



894620



893120



**10 Year**  
Limited Warranty

Capacity Gallons/Liters	Number of Doors and Style	Dimensions H x W x D		Adjustable Shelves	Approv./L.stg Regulation	Sure-Grip® Model No	Ship Wt lb/kg
		Exterior	Interior				
30/114	2 door, manual-close	44 in x 43 in x 21.75 in 1118 x 1093 x 552 mm	40.125 x 39.5 x 18.375 in 1019 x 1003 x 467 mm	1	N,O,A	893100	207/94
30/114	2 door, self-close			1	N,O,A,I	893120	212/96
45/170	2 door, manual-close	65.25 x 43 x 21.75 in 1657 x 1093 x 552 mm	61 x 39.5 x 18.375 in 1549 x 1003 x 467 mm	2	N,O,A	894600	284/129
45/170	2 door, self-close			2	N,O,A,I	894620	287/130



UV-protected powdercoat paint finish for long wearing protection.

## Safesite™ Combo Safety Chest **NEW**

**Provide safe, secure storage for flammables along with tools and other valuables**

Protect flammables from ignition sources, misuse or theft by storing them in a specially designed Safesite Combo Safety Chest. It provides protected storage of fuels, paint thinners, solvents, or other flammables typically found at construction and utility jobsites.

Top quality features include heavy-duty, 16-gauge welded steel body finished in a tough UV-protected powdercoat paint that stands up to abusive conditions. Fire resistant 16-gauge steel safety compartment liner with 18-gauge lid provides double walled protection—accepts 5-gallon (19-L) Justrite safety cans. Designed with dual security, Safesite™ provides superior protection from unauthorized access. Dual security—outside lid offers padlock security while inside compartment features U-Loc™ technology.



Description	Dimensions H x W x D		Model No	Ship Wt lb/kg
	Exterior	Interior		
Safesite™ Combo Safety Chest	29.5 x 48 x 24 in 749 x 1219 x 610 mm	lg: 21 x 30.5 x 23.75 in 533.5 x 775 x 603 mm	16036	196/90
		sm: 18 x 12.25 x 21 in 457 x 311 x 533.5 mm		

### Accessories

Description	Dimensions	Load Capacity (kg)	Model No	Ship Wt lb/kg
4 Heavy-duty casters (2-locking)	5 in dia x 1.5 in width	2000 lb (907)	16043	17/8
4 casters (2-locking)	127 x 38 mm	1120 lb (508)	16044	10/5
Set of two No. 5 Master Locks			50963A	4/2



**Global Protection**  
Justrite products are available worldwide. For pricing and availability, simply contact the authorized distributor nearest you.



8945008

## Safety Cabinet and Can Combo Packages

**Combination package of a safety cabinet with safety cans—perfect for equipping a new facility with popular flammable storage product**

Protect your people and facility against fire by using fully compliant safety products. Steel cabinets and cans feature a tough power-coat finish for durability and chemical resistance. High performance safety cabinets and Type I safety cans are backed by a 10-year limited warranty.

To learn more about the safety features of these products, see page 7 (safety cabinets) and 47 (safety cans).

Cabinets meet NFPA and OSHA regulations and are FM-approved.



8930208

Capacity Gallons/Liters	Number of Doors and Style	Dimensions H x W x D		Cabinet and Can Number	Approv/Lstg Regulation	Sure-Grip® Model No	Ship Wt lb/kg
		Exterior	Interior				
30/114	2 door, manual-close	44 x 43 x 18 in 1118 x 1092 x 457 mm	39.625 x 39.5 x 14.562 in 1006 x 1003 x 370 mm	893000 cabinet with six 7150100 cans	FM,N,O,A	8930008	263/119
	2 door, self-close			893020 cabinet with six 7150100 cans	FM,N,O,A,I	8930208	269/122
45/170	2 door, manual-close	65 x 43 x 18 in 1651 x 1092 x 457 mm	60.5 x 39.5 x 14.562 in 1537 x 1003 x 370 mm	894500 cabinet with nine 7150100 cans	FM,N,O,A	8945008	362/164
	2 door, self-close			894520 cabinet with nine 7150100 cans	FM,N,O,A,I	8945208	366/166



## Sure-Grip® EX High Security Safety Cabinets

For environments requiring increased security against unauthorized access

- High visibility steel bar across both doors deters prying.
- Fully compliant, fire-resistant design.

Use these cabinets in higher-risk environments such as correctional facilities, construction site trailers, schools and maintenance areas without worrying about break-ins. Steel bar across both doors, padlock holes that accept optional No. 5 Master Lock® and fully welded, 18-gauge (1-mm) double-wall construction deter prying.

Cabinets come in four colors—yellow and red for flammables and combustibles, green for pesticides and blue for corrosives. Adjustable SpillSlope® shelves direct any spills to back and bottom of a leakproof 2-in (51-mm) sump. The green and blue cabinets also include poly liners for shelves along with a poly sump liner to protect against corrosion. Three-point stainless steel bullet latch provides fail-safe, positive door closure. Cabinets include dual 2-in (51-mm) vents with integral flame arresters, built-in grounding connector, and leveling feet for stability on uneven surfaces.

Cabinets meet NFPA and OSHA regulations and are FM-approved.



Crossbar and sidebar provide double-layer steel strength—accepts No. 5 Master Lock® padlock for security.



Capacity Gallons/Liters	Color	Label	Dimensions H x W x D		Adjustable Shelves	Approv/Lstg Regulation	Manual Close Model No	Ship Wt lb/kg	Self-Close Model No	Ship Wt lb/kg
			Exterior	Interior						
45/170	yellow	flammable	65 x 43 x 18 in 1651 x 1092 x 457 mm	60.5 x 39.5 x 14.562 in 1537 x 1003 x 370 mm	2	FM,N,O,A	29884Y	330/150	SC29884Y	334/152
	red	flammable					29884R		SC29884R	
	green	pesticide					29884P	336/152	SC29884P	340/154
	blue	acid					29884B		SC29884B	

### Accessories

Description	Fits Cabinet Styles	Dimensions W x D	Model No	Ship Wt lb/kg
SpillSlope® steel shelf	30 & 45 Gallon — 43 in W (1092 mm)	39.375 x 14 in (1000 x 356 mm)	29937	10/5
Replacement security bar, red	45 Gallon	2 x .25 in (51 x 6 mm)	50961R	15/7
Replacement security bar, yellow	45 Gallon	2 x .25 in (51 x 6 mm)	50962Y	
Set of two No. 5 Master Locks®			50963A	4/2

Master Lock® is a registered trademark of Master Lock Co.

## Premium Insulated Cabinets—ULC Listed

Double-wall construction with 2-in (55-mm) thick high-density insulation throughout provides increased fire protection

- Welded, 18-gauge (1-mm) steel double-wall with insulation.
- Intumescent tape expands to eight times its volume to seal doors.

These cabinets withstand the stringent fire testing requirements of the National Fire Code of Canada. A full 2-in (51-mm) of high-density insulation within the walls, doors, ceiling and floor plus intumescent tape that expands to seal doors provide the ultimate fire protection.

Adjustable shelves direct any spills to back and bottom of a leakproof 2-in (51-mm) containment sump. U-Loc™ handle comes with double key set or accepts optional padlock for added security. Cabinets feature a three-point lock, dual 2-in (51-mm) vents with integral flame arresters, and leveling feet.

Cabinets are ULC listed, and meet NFPA and OSHA regulations.



NX25450

Capacity Gallons/Liters	Number of Doors and Style	Dimensions H x W x D Exterior	Adjustable Shelves	Approv/Lstg Regulation	Model No	Ship Wt lb/kg
30/114	2 door, manual	44 x 43 x 18 in 1118 x 1092 x 457 mm	1	FM,ULC,N,O,A	NX25300	310/141
45/170	2 door, manual	65 x 43 x 18 in 1651 x 1092 x 457 mm	2	FM,ULC,N,O,A	NX25450	431/196



Ninety minutes of fire protection provides high level of safety when point-of-use storage is required.



## 90-Minute EN Safety Storage Cabinets **NEW**

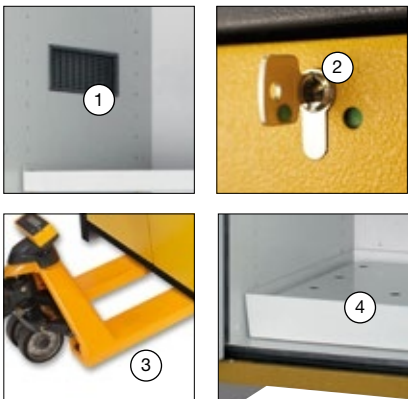
**Extreme fire resistance for high risk environments—store flammables with 90-minutes of protection**

- EN, OSHA and NFPA compliant—Independently fire tested and approved by FM Approvals and MPA Dresden.
- Hybrid-close door action—manual close doors stop in any position, but self close in the event of a fire to protect contents.
- Security—independent cylinder locks on each door includes locking state indicator (red/green).

Constructed using multiple layers of fire-resistant gypsum and mineral fiber insulation, cabinet body has a rugged powder coated steel exterior that provides excellent corrosion resistance. Under fire conditions, intumescent strips expand and hermetically seal all gaps to reduce heat entering the cabinet, providing 90-minutes of content protection and extended evacuation time. Hybrid style doors open or close manually and include a damper that adjusts the force needed to move the doors. In the event of a fire, the built-in fusible link system releases to allow automatic closure of doors at 122°F (50°C). Cabinets are EN compliant, FM-approved and meet NFPA 30, NFPA 1, and OSHA standards.

Powder-coat finish steel shelves adjust on 1-1/4-inch (32-mm) increments and have a load capacity of 165-lbs (75-kgs). Shelves with 1-inch (30-mm) high ledge prevent small containers from easily sliding off. Removable bottom sump with detachable perforated insert features a 3-sided lip seal to ensure leaks or spills from shelves are captured at the bottom of the 3-in (76-mm) sump, keeping containers stored in the sump clean and dry.

Haz-Alert™ reflective tri-lingual warning labels are highly visible under fire conditions or during power outages when illuminated with a flashlight. Cabinets also feature adjustable leveling feet, an integrated transport base for easy repositioning (base cover optional), and mandatory air vents per EN 14470-1. Vent butterfly valve closes securely at 158°F (70°C) in the event of a fire. Vents include flame arresters and caps for FM compliance.



1. Upper and lower vents with butterfly valve close automatically at 158°F (70°C) under fire conditions. Bright interior provides maximum visibility in low light conditions to quickly identify contents.
2. Independent cylinder locks on each door includes locking state indicator (red/green).
3. Integrated transport base accepts pallet jack for easy repositioning of empty cabinets. Accepts optional, removable base cover.
4. Removable sump with separate detachable perforated insert allows spills to flow into sump for easy cleaning, and keeps containers elevated to stay clean and dry.



22605



22607 with optional base cover 22637



**Global Protection**  
Justrite products are available worldwide. For pricing and availability, simply contact the authorized distributor nearest you.



Fire Rating (Minutes)	Capacity Gallons/Liters (5 Gallon Can)	Maximum Capacity* (1 Liter Bottle)	Number of Doors and Style	Dimensions H x W x D		Adjustable Shelves	Approv/Lstg Regulation	Model No	Ship Wt lb/kg
				Exterior	Interior				
90	30/114	168	2 door, hybrid-close	76.89 x 35.16 x 24.21 in 1953 x 893 x 615 mm	64.85 x 29.5 x 20.55 in 1647 x 750 x 522 mm	3	FM,EN,N,O,A	22605	840/381
	45/170	264		76.89 x 46.97 x 24.21 in 1953 x 1193 x 615 mm	64.85 x 41.34 x 20.55 in 1647 x 1050 x 522 mm			22607	1016/461

\* Achieved through the use of additional shelves, maximum capacity is an estimate and may vary depending upon container size. Check with local authority for maximum allowable quantity restrictions.



## 30-Minute EN Safety Storage Cabinets **NEW**

Safely store and segregate flammables—30 minutes of extreme fire-resistance

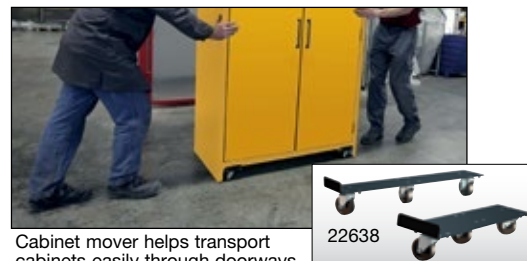
- EN, OSHA and NFPA compliant—Independently fire tested and approved by FM Approvals and MPA Dresden.
- Hybrid-close door action—manual close doors stop in any position, but self close in the event of a fire to protect contents.

Designed to provide 30-minutes of fire resistance, attractive two-toned yellow cabinet is constructed with a body of melamine resin and flame retardant special plates, and a steel door front covered by a textured, durable powder-coat finish. Under fire conditions, special intumescent protection strips expand and seal hermetically to close gaps between the door(s) and frame to reduce heat entering the cabinet. Hybrid style door(s) operate manually and stop in any position, but in the event of a fire, the built-in fusible link system will melt and release to allow automatic closure of door(s) at 122°F (50°C). Cabinets are EN compliant, FM-approved and meet NFPA 30, NFPA 1, and OSHA standards.

Cabinets have many of the same features as the 90-minute model, including leakproof, removable bottom sump with perforated insert, adjustable powder-coat finish steel shelves with 1-inch (30-mm) lip and load capacity of 165-lbs (75-kgs), Haz-Alert™ warning label, and a ground connection. Air vents close securely at 158°F (70°C) in the event of a fire and include flame arresters and caps. Independent cylinder lock on door(s) provide added security. Bright interior color offers maximum visibility to stored goods. Integrated transport base makes it easy to reposition empty cabinets. Accepts removable base cover (optional).



Position single-door extreme fire resistance cabinets where space is limited. Easily add a second cabinet if storage needs increase.



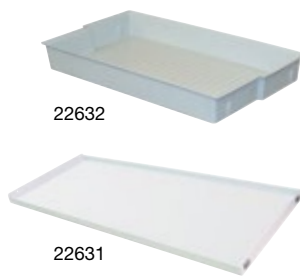
Cabinet mover helps transport cabinets easily through doorways and spaces where a pallet jack is not practical.



22601



22603 with optional base cover 22635



22632

22631



22633

22634

22638



Fire Rating (Minutes)	Capacity Gallons/Liters (5 Gallon Can)	Maximum Capacity* (1 Liter Bottle)	Number of Doors and Style	Dimensions H x W x D		Adjustable Shelves	Approval/Lstg Regulation	Model No	Ship Wt lb/kg
				Exterior	Interior				
30	30/114	168	1 door, hybrid-close	76.65 x 34.02 x 24.41 in 1947 x 864 x 620 mm	64.02 x 29.5 x 20.44 in 1626 x 750 x 519 mm	3	FM,EN,N,O,A	22601	507/230
	45/170	264	2 door, hybrid-close	76.65 x 45.83 x 24.41 in 1947 x 1164 x 620 mm	64.02 x 41.34 x 20.44 in 1626 x 1050 x 519 mm			22603	622/282

\* Achieved through the use of additional shelves, maximum capacity is an estimate and may vary depending upon container size. Check with local authority for maximum allowable quantity restrictions.

### Extra Accessories

Description	Fits Cabinet Styles	Dimensions	Model No	Ship Wt lb/kg
Steel shelf, powder-coated	30 and 90 Minute - 30 gallon (114 L)	W x D: 29.21 x 17.3 in (742 x 435 mm)	22630	15/7
	30 and 90 Minute - 45 gallon (170 L)	W x D: 41.02 x 17.3 in (1042 x 435 mm)	22631	11/5
Polypropylene tray	30 and 90 Minute - 30 gallon (114 L)	H x W x D: 3.47 x 29.13 x 17.09 in (88 x 740 x 434 mm)	22632	6/3
Polyethylene tray	30 and 90 Minute - 45 gallon (170 L)	H x W x D: 1.97 x 40.95 x 16.93 in (50 x 1040 x 430 mm)	22633	
Base cover	30 Minute - 30 gallon (114 L)	H x W: 3.43 x 30.95 in (87 x 786 mm)	22634	5/2
	30 Minute - 45 gallon (170 L)	H x W: 3.43 x 42.76 in (87 x 1086 mm)	22635	7/3
	90 Minute - 30 gallon (114 L)	H x W: 3.35 x 32.21 in (85 x 818 mm)	22636	3/2
	90 Minute - 45 gallon (170 L)	H x W: 3.35 x 44.02 in (85 x 1118 mm)	22637	4/2
Cabinet mover - Set of 2	30 and 90 Minute - 30 & 45 gallon (114 & 170 L)	H x W x D: 3.54 x 5.51 x 23.62 in (90 x 140 x 600 mm)	22638	20/9



Use these cabinets for the safe storage of flammables under fume hoods, benches or counters.

## Sure-Grip® EX Under Fume Hood Safety Cabinets

Fully compliant and designed for safe storage of solvents and flammables in laboratories

- Welded, 18-gauge (1-mm) steel double-wall with 1-1/2-in (38-mm) insulating air space.
- Back wall vents with built-in flame arresters.
- Stainless steel, 3-point bullet self-latching system.

Perfect for use in laboratories. Cabinets measure 35-3/4-in (908-mm) high to fit under fume hoods, benches or counters. The 4-inch (102-mm) high x 3-in (77-mm) deep toe kick allows the hood user to stand closer, which means less leaning and better ergonomics. Cabinets feature an adjustable SpillSlope® shelf that directs any spills to back and bottom of a leakproof 2-in (51-mm) sump. U-Loc™ handle comes with double key set and accepts optional padlock for added security. Durable powder-coat finish, inside and out, provides maximum chemical resistance. Cabinets come in three colors—safety yellow, stainless silver or light neutral to complement laboratory settings. Single-door cabinets are available in either left or right-hinge door configuration. Highly reflective Haz-Alert™ hazard labels at top and bottom provide easy visibility.

Note: 35-3/4-in (908-mm) height includes leg levelers installed and extended 5/8-in (15.9-mm).



882410

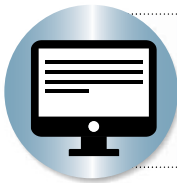


882424



883607

**Global Protection**  
Justrite products are available worldwide. For pricing and availability, simply contact the authorized distributor nearest you.



**Need a custom-made cabinet?**  
Configure a cabinet to meet your specific application. Visit our website and search "custom cabinet" to define your specifications on our Custom Cabinet form.



Capacity Gallons/Liters	Number of Doors and Style	Dimensions H x W x D		Approv/Lstg Regulation	Yellow Model No	Silver Model No	Lt Neutral Model No	Ship Wt lb/kg	
		Exterior	Interior						
15/57	1 door, right hinge, manual	35.75 x 24 x 21.625 in 908 x 610 x 549 mm	26.531 x 20.77 x 18.327 in 674 x 528 x 466 mm	FM,O,A,N	882400	882404	882407	135/61	
	1 door, left hinge, manual				882410	882414	882417		
	1 door, right hinge, self-close				FM,O,A,N,I	882420	882424	882427	136/62
	1 door, left hinge, self-close					882430	882434	882437	
19/72	2 doors, manual	35.75 x 30 x 21.625 in 908 x 762 x 549 mm	26.531 x 26.77 x 18.327 in 674 x 680 x 466 mm	FM,O,A,N	883000	883004	883007	176/80	
	2 doors, self-close				FM,O,A,N,I	883020	883024		883027
23/87	2 doors, manual	35.75 x 36 x 21.625 in 908 x 914 x 549 mm	26.531 x 32.77 x 18.327 in 674 x 832 x 466 mm	FM,O,A,N	883600	883604	883607	186/84	
	2 doors, self-close				FM,O,A,N,I	883620	883624	883627	187/85
31/117	2 doors, manual	35.75 x 48 x 21.625 in 908 x 1219 x 549 mm	26.531 x 44.77 x 18.327 in 674 x 1137 x 466 mm	FM,O,A,N	884800	884804	884807	240/109	
	2 doors, self-close				FM,O,A,N,I	884820	884824		884827

**Extra Accessories**

Description	Fits Cabinet Styles	Dimensions W x D	Model No	Ship Wt lb/kg
SpillSlope® steel shelf	15 gallon (57 L)	20.125 x 18 in (511 x 457 mm)	29950	12/5
SpillSlope® steel shelf	19 gallon (72 L)	26.125 x 18 in (664 x 457 mm)	29951	13/6
SpillSlope® steel shelf	23 gallon (87 L)	32.5 x 18 in (826 x 457 mm)	29949	14/6
SpillSlope® steel shelf	31 gallon (117 L)	44.333 x 18 in (1130 x 457 mm)	29953	15/7

## Sure-Grip® EX Flammable Waste Safety Cabinets

*Temporary on-site storage solution for flammable waste*

- Large “Flammable Waste” warning label on door identifies contents.
- Welded, 18-gauge (1-mm) double-walled steel with 1-1/2-in (38-mm) insulating air space for fire resistance.

Use these safety cabinets for the temporary collection and segregation of flammable liquid waste. Clearly marked cabinets prevent mix up of contents. Cabinets feature adjustable SpillSlope® shelves that direct any spills to back and bottom of a leakproof 2-in (51-mm) sump. Three-point stainless steel bullet latch provides fail-safe, positive door closure. U-Loc™ handle comes with double key set and accepts optional padlock for added security. Durable powder-coat finish, inside and out, provides maximum chemical resistance. Cabinets feature dual 2-in (51-mm) vents with integral flame arresters, built-in grounding connector, and leveling feet for stability on uneven surfaces.



8930053

Cabinets meet NFPA and OSHA regulations and are FM approved. Self-closing models also comply with the International Fire Code.



Capacity Gallons/Liters	Number of Doors and Style	Dimensions H x W x D		Adjustable Shelves	Approv/Lstg Regulation	Sure-Grip® Model No	Ship Wt lb/kg
		Exterior	Interior				
30/114	2 door, manual	44 x 43 x 18 in	39.625 x 39.5 x 14.562 in	1	FM,N,O,A	8930053	232/105
	2 door, self-close	1118 x 1092 x 457 mm	1006 x 1003 x 370 mm		FM,N,O,A,I	8930253	236/107
45/170	2 door, manual	65 x 43 x 18 in	60.5 x 39.5 x 14.562 in	2	FM,N,O,A	8945053	299/136
	2 door, self-close	1651 x 1092 x 457 mm	1537 x 1003 x 370 mm		FM,N,O,A,I	8945253	301/137

## Sure-Grip® EX Flammable Waste Drum Storage Cabinets

*Safely segregate and store larger quantities of flammable waste*

- White color quickly identifies cabinet for waste liquid storage.
- Half-depth shelf provides additional storage—sized to provide enough space to accommodate a drum equipped with a pump or funnel.

Temporarily store flammable liquid waste in drums awaiting pick up and disposal in these cabinets for vertically stored drums. Cabinets are constructed of sturdy 18-gauge (1-mm) thick double-wall, welded steel with 1-1/2” (38-mm) of insulating air space for fire resistance. High-performance, self-latching doors close easily and securely for maximum protection under fire conditions. Fail-safe closing mechanism ensures three-point stainless steel bullet latching system works every time. U-Loc™ handle comes with a cylinder lock and key set and accepts an optional padlock for added security. Cabinets also feature dual vents with flame arresters, four adjustable self-leveling feet and built-in grounding connector to prevent static build-up. Durable powder-coat finish provides excellent chemical resistance.



8991053



Drum Capacity Gallons/Liters	Number of Doors and Style	Dimensions H x W x D		Adjustable Shelves	Approv/Lstg Regulation	Sure-Grip® Model No	Ship Wt lb/kg
		Exterior	Interior				
One vertical drum - 55/200	2 door, manual	65 x 34 x 34 in	60.5 x 30.75 x 30.34 in	1	FM,N,O,A	8962053	394/179
	2 door, self-close	1651 x 864 x 864 mm	1537 x 781 x 771 mm		FM,N,O,A,I	8962253	396/180
Two vertical drums - 55/200*	2 door, manual	65 x 59 x 34 in	60.5 x 86.5 x 30.34 in		N,O,A	8991053	593/269

\*OSHA 29CFR 1910.106(d)(3) states that not more than 60 gallons (227L) of Category 1, 2, or 3 flammable liquids, nor more than 120 gallons (454L) of Category 4 flammable liquids may be stored in a safety cabinet.

### Extra Accessories

Description	Fits Cabinet Styles	Dimensions W x D	Model No	Ship Wt lb/kg
SpillSlope® steel shelf	30 & 45 gallon (114 & 170 L) - 43 in W (1092 mm)	39.375 x 14 in (1000 x 356 mm)	29937	10/5
SpillSlope® half-depth steel shelf	Single vertical 55-gallon (200 L) drum	30.375 x 14 in (771 x 356 mm)	29946	8/4
SpillSlope® half-depth steel shelf	Double vertical 55-gallon (200 L) drum	55.375 x 14 in (1406 x 356 mm)	29947	18/8
Drum roller	Single vertical 55-gallon (200 L) drum	29.5 x 30 in (749 x 762 mm)	25920	52/24
Drum roller	Double vertical 55-gallon (200 L) drum	55.5 x 30 in (1408 x 762 mm)	25922	99/45
Drum ramp for all drum cabinets	All drum cabinets	28 x 24.5 in (711 x 622 mm)	25932	35/16





Spacious design allows cabinet to be used as a pumping station.

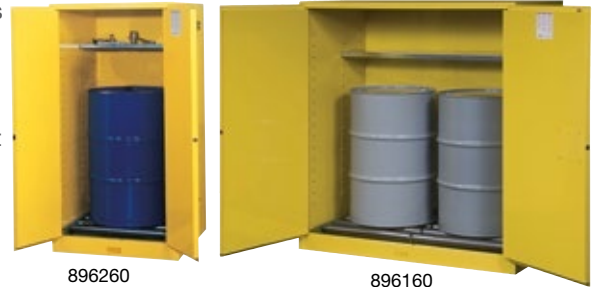
**Sure-Grip® EX Vertical Drum Safety Cabinets**

**Safely store solvent filled drums**

- Fully compliant with OSHA and NFPA regulations.
- Sturdy 18-gauge (1-mm) steel, welded for strength and greater fire resistance.

Use these vertical drum safety cabinets to safely store 30- to 55-gallon (110- to 200-L) drums. The removable, adjustable, half-depth shelf provides enough head space to accommodate a drum with a pump or funnel so the cabinet can be used as a pumping or waste accumulation station, and also allows you to store additional materials or spare accessories.

Fire-resistant design features double-wall construction with 1-1/2 in (38-mm) of insulating air space, dual 2-in (51-mm) vents with flame arresters, a three-point bullet latching system for failsafe, positive closure, and a 2-in (51-mm) sump to capture spills. U-Loc™ handle comes with double key set and accepts optional padlock for added security. Built-in grounding connector allows for proper grounding to reduce static build-up.



Models with drum rollers facilitate the movement of heavy drums; models with removable drum support keeps drum elevated off cabinet sump.



Drum Capacity Gallons/Liters	Style	Includes	Dimensions H x W x D		Shelves	Approv/Lstg Regulation	Yellow Model No	Red Model No	Gray Model No	White Model No	Ship Wt lb/kg
			Exterior	Interior							
One - 55/200	manual self-close	Drum Support	65 x 34 x 34 in	60.5 x 30.75 x 30.34 in	1	FM,N,O,A	896200	896201	896203	896205	391/177
			1651 x 864 x 864 mm	1537 x 781 x 771 mm		FM,N,O,A,I	896220	896221	896223	896225	393/178
Two - 55/200*	manual self-close	Drum Support	65 x 59 x 34 in	60.5 x 56 x 30.34 in		N,O,A	899100	899101	899103	899105	593/269
			1651 x 1498 x 864 mm	1537 x 1422 x 771 mm		N,O,A,I	899120	—	—	—	595/270
One - 55/200	manual self-close	Drum Rollers	65 x 34 x 34 in	60.5 x 30.75 x 30.34 in		FM,N,O,A	896260	896261	896263	896265	391/177
			1651 x 864 x 864 mm	1537 x 781 x 771 mm		FM,N,O,A,I	896270	896271	896273	896275	393/178
Two - 55/200*	manual self-close	Drum Rollers	65 x 59 x 34 in	60.5 x 56 x 30.34 in		N,O,A	899160	899161	899163	899165	645/293
			1651 x 1498 x 864 mm	1537 x 1422 x 771 mm		N,O,A,I	899170	—	—	—	647/294
Two - 30/220	manual self-close	Drum Rollers	65 x 43 x 34 in	60.5 x 39.5 x 30.34 in		FM,N,O,A	899060	899061	899063	899065	489/222
			1651 x 1092 x 864 mm	1537 x 1003 x 771 mm		FM,N,O,A,I	899070	899071	899073	899075	529/240

\*OSHA 29CFR 1910.106(d)(3) states that not more than 60 gallons (227L) of Category 1, 2, or 3 flammable liquids, nor more than 120 gallons (454L) of Category 4 flammable liquids may be stored in a safety cabinet.

**Sure-Grip® EX Double-Duty Drum Safety Cabinets**

**Store drum and safety cans in a single cabinet**

Use these double-duty cabinets to safely store flammable liquids contained in drums and safety cans. They feature two separate compartments that fit one vertical 55- or 30-gallon (200- or 110-L) drum and up to twelve 5-gallon (19-L) safety cans. Sturdy 18-gauge (1-mm) double-wall steel construction offers excellent durability.

Cabinets feature self-latching, three-point locking doors for maximum protection under fire conditions. Latching system engages automatically when the door is pushed closed. Drum compartment features drum rollers in the sump and one half-depth SpillSlope® safety shelf; can compartment includes two full-size adjustable SpillSlope® shelves that direct spills to back and bottom of a 2-in (51-mm) sump.



Capacity Gallons/Liters	Number of Doors and Style	Dimensions H x W x D		Approv/Lstg Regulation	Sure-Grip® Model No	Ship Wt lb/kg
		Exterior	Interior			
115/435*	2 door, manual with rollers	65 x 59 x 34 in 1651 x 1499 x 864 mm	sm: 60.5 x 23.25 x 30.375 1537 x 591 x 771 mm	N,O,A	899260	672/305
	2 door, self-close with rollers		lg: 60.5 x 30.625 x 30.375 1537 x 778 x 771 mm	N,O,A,I	899270	674/306

\*OSHA 29CFR 1910.106(d)(3) states that not more than 60 gallons (227L) of Category 1, 2, or 3 flammable liquids, nor more than 120 gallons (454L) of Category 4 flammable liquids may be stored in a safety cabinet.

## Sure-Grip® EX Horizontal Drum Safety Cabinets

Use for drum storage or as a dispensing station

- Complies to OSHA and NFPA regulations.
- Double-wall construction with 1-1/2 in (38-mm) insulating air space for fire resistance.
- Independently fire tested and approved by FM Approvals.

Safely house horizontally positioned drums for use in gravity-flow dispensing applications. The interior provides space for a drip-can and includes tracks to guide drum cradle (sold separately below) into position.



899320 (shown with optional cradle 08800)

Sturdy, 18-gauge (1-mm) welded steel with durable powder-coat finish, inside and out, provides excellent chemical resistance. Three-point, stainless steel bullet latching system ensures positive door closure and maximum protection under fire conditions. U-Loc™ handle comes with a cylinder lock and key set and accepts an optional padlock for added security. Additional safety features include a 2-in (51-mm) leakproof sump to capture dangerous spills, dual 2-in (51-mm) vents with flame arresters, and a built-in grounding connector for proper grounding to reduce static build-up.



Use proper grounding techniques when dispensing flammable liquids



Drum Capacity Gallons/Liters	Number of Doors and Style	Dimensions H x W x D		Approv/Lstg Regulation	Sure-Grip® Model No	Ship Wt lb/kg
		Exterior	Interior			
One - 55/200	2 door, manual	50 x 30 x 48 in	46.375 x 27 x 44.75 in	FM,N,O,A	899300	361/164
	2 door, self-close	1270 x 762 x 1219 mm	1178 x 686 x 1137 mm	FM,N,O,A,I	899320	363/165



**Proper grounding reduces the risk of fire . . .**

Choose from a variety of bonding and grounding wires—see page 73.

**Global Protection**  
Justrite products are available worldwide. For pricing and availability, simply contact the authorized distributor nearest you.



## Accessories for Drum Cabinets

### Makes drum handling easier

Use the cabinet ramp to easily load drums into a cabinet using a cart. Ramp fits over the sill to keep securely in place. Tread design on surface maximizes traction. Fits all styles of Justrite drum cabinets. Load limit is 750-lb (340-kg). Not for use with wheeled drum cradle 08800.

Use drum roller for vertical storage cabinet 8962001 (sold separately above) to easily maneuver heavy drums. Use wheeled drum cradle for positioning a horizontal drum for gravity-flow dispensing.



Ramp side rails provide strength and guidance



08800

Description	Fits Cabinet sizes	Dimensions W x D	Model No	Ship Wt lb/kg
SpillSlope® Half-depth Steel Shelf	Single Vertical 55-gallon (200 L) Drum and Double-Duty 115-gallon (435 L)	30.375 x 14 in (771 x 356 mm)	29946	8/4
SpillSlope® Steel Shelf	Double-Duty 115-gallon (435 L)	23 x 29 in (584 x 737 mm)	29974	13/6
SpillSlope® Half-depth Steel Shelf	Double Vertical 55-gallon (200 L) Drum	55.375 x 14 in (1406 x 356 mm)	29947	18/8
Drum Roller	Single Vertical 55-gallon (200 L) Drum	29.5 x 30 in (749 x 762 mm)	25920	52/24
Drum Roller	Double Vertical 55-gallon (200 L) Drum	55.5 x 30 in (1408 x 762 mm)	25922	99/45
Drum Roller	Double Vertical 30-gallon (114 L) Drum	37 x 30 in (940 x 762 mm)	25923	55/25
Drum Ramp for All Drum Cabinets	All Drum Cabinets	28 x 24.5 in (711 x 622 mm)	25932	35/16
Drum Cradle for Single Drum	Single Horizontal 55-gallon (200 L) Drum	22.5 x 35.5 in (571 x 902 mm)	08800	32/15

**Sure-Grip® EX Safety Cabinets for Combustibles**

**Safe storage for paints and inks**

- Fully compliant to OSHA and NFPA regulations.
- Independently fire tested and approved by FM Approvals.

Easily separate and identify combustible liquids using these red safety cabinets. Adjustable shelves accommodate many smaller paint tins, aerosols and inks found in printing, painting, furniture and motor vehicle operations. Cabinets feature sturdy double-wall, 18-gauge (1-mm) steel construction with 1-1/2-in (38-mm) of air space and dual flame arresting vents. Three-point, self-latching doors close easily and securely for maximum protection under fire conditions. Flush-mounted U-Loc™ handle reduces dangerous catches from passing traffic—comes with double key set and accepts optional padlock for added security. Patented SpillSlope® safety shelves are designed to direct spills to back and bottom into a 2-in (51-mm) leakproof sump. Under fire conditions when illuminated by a flashlight, highly reflective Haz-Alert™ warning labels shine brightly to alert emergency personnel to contents.



Multiple adjustable SpillSlope® safety shelves provide storage versatility for different sized paint cans.



894511

893011



**10 Year**  
Limited Warranty

Capacity Gallons/Liters	Number of Doors and Style	Dimensions H x W x D		Adjustable Shelves	Approv/Lstg Regulation	Red Model No	Yellow Model No	Ship Wt lb/kg
		Exterior	Interior					
20/76	1 door, manual	44 x 23.25 x 18 in	39.625 x 20 x 14.562 in	2	FM,N,O,A	891511	891510	156/71
	1 door, self-close	1118 x 591 x 457 mm	1006 x 508 x 370 mm		FM,N,O,A,I	891531	891530	157/71
40/151	2 door, manual	44 x 43 x 18 in	39.625 x 39.5 x 14.562 in	3	FM,N,O,A	893011	893010	247/112
	2 door, self-close				FM,N,O,A,I	893031	893030	250/113
	1 sliding door, self close				FM,N,O,A,I	893091	893090	246/112
60/227	2 door, manual	65 x 43 x 18 in	60.5 x 39.5 x 14.562 in	5	FM,N,O,A	894511	894510	303/137
	2 door, self-close				FM,N,O,A,I	894531	894530	305/138
	1 sliding door, self-close				FM,N,O,A,I	894591	894590	345/156
96/363*	2 door, manual	65 x 34 x 34 in	60.5 x 30.75 x 30.34 in	5	FM,N,O,A	896011	896010	398/181
	2 door, self-close				1651 x 864 x 864 mm	1537 x 781 x 771 mm	FM,N,O,A,I	896031

\*OSHA 29CFR 1910.106(d)(3) states that not more than 60 gallons (227L) of Category 1, 2, or 3 flammable liquids, nor more than 120 gallons (454L) of Category 4 flammable liquids may be stored in a safety cabinet.

**Extra Accessories**

Description	Fits Cabinet Styles	Dimensions W x D	Model No	Ship Wt lb/kg
SpillSlope® steel shelf	20 gallon (76 L) free standing - 23.25 in W (591 mm)	19.625 x 14 in (498 x 356 mm)	29936	6/3
SpillSlope® steel shelf	Aerosol can wall mount - 43 in W (1092 mm)	39.375 x 8.625 in (1000 x 219 mm)	29938	7/3
SpillSlope® steel shelf	30 & 45 gallon (114 & 170 L) or 40 & 60 gallon (151 & 227 L) - 43 in W (1092 mm)	39.375 x 14 in (1000 x 356 mm)	29937	10/5
SpillSlope® steel shelf	60 gallon (227 L) or 96 gallon (363L) - 34 in W (864 mm)	30.375 x 29 in (771 x 737 mm)	29944	16/7

**Sure-Grip® EX Wall Mount Cabinet for Aerosol Cans**

Store multiple aerosol cans on a wall near workspace for easy access

This cabinet has the same features and benefits of Justrite's larger safety cabinets for storage of combustibles, except it's designed to be mounted on a wall to save on floor space. With a depth of only 12-in (305-mm) and three shelves, it safely holds over 100 aerosol cans and comes complete with mounting hardware.



**10 Year**  
Limited Warranty

Nom Capacity Aerosol Cans	Number of Doors and Style	Dimensions H x W x D		Adjustable Shelves	Approv/Lstg Regulation	Red Model No	Ship Wt lb/kg
		Exterior	Interior				
168	2 door, manual	44 x 43 x 12 in	39.625 x 39.5 x 8.75 in	3	FM,N,O,A	8934016	215/98
		1118 x 1092 x 305 mm	1006 x 1003 x 222 mm				

## Sure-Grip® EX Safety Cabinets for Pesticides

Designed for the safe and secure storage of agricultural and turf management chemicals

- Double-wall construction with 1-1/2-in (38-mm) insulating air space for fire resistance.
- Easy close, 3-point self-latching doors.
- Dual vents with integral flame arresters.

Improperly stored pesticides present a substantial danger to people and the environment. Designed specifically to store pesticides, herbicides, fertilizers and other turf chemicals, these green cabinets feature welded 18-gauge (1-mm) steel construction with powder-coat finish for excellent chemical resistance. SpillSlope® steel shelves fitted with polyethylene tray adjust on 3-in (77-mm) centers to accommodate a wide variety of containers. Thirty-gallon (114-liter) models No. 893004 and 893024 include an additional polyethylene top work tray which can be placed on the top of the cabinet for a handy work surface. U-Loc™ handle comes with double key set and accepts optional padlock for added security. Three-point stainless steel bullet latch provides fail-safe, positive door closure. Cabinets feature trilingual Haz-Alert™ reflective warning label and leveling feet.

All cabinets meet NFPA and OSHA regulations and are FM-approved. Self-closing models also comply with the International Fire Code.



Safely store turf management chemicals to reduce the risk of accidental poisons and fires.

For indoor maintenance areas in these environments:

- Golf courses
- Park districts
- Amusement parks
- Nurseries
- School campuses
- Lawn care companies
- Farms
- Cemeteries
- Pest control companies



**Global Protection**  
Justrite products are available worldwide. For pricing and availability, simply contact the authorized distributor nearest you.



Capacity Gallons/Liters	Number of Doors and Style	Dimensions H x W x D		Adjustable Shelves	Approval/Lstg Regulation	Sure-Grip® Model No	Ship Wt lb/kg
		Exterior	Interior				
12/45	1 door, manual, compac	35 x 23.25 x 18 in	30.5 x 20 x 14.562 in	1	FM,N,O,A,	891204	135/61
	1 door, self-close, compac	889 x 591 x 457 mm	775 x 508 x 370 mm		FM,N,O,A,I	891224	122/55
30/114	2 door, manual	44 x 43 x 18 in	39.625 x 39.5 x 14.562 in		FM,N,O,A,	893004	239/108
	2 door, self-close	1118 x 1092 x 457 mm	1006 x 1003 x 370 mm		FM,N,O,A,I	893024	240/109
45/170	2 door, manual	65 x 43 x 18 in	60.5 x 39.5 x 14.562 in		FM,N,O,A,	894504	299/136
	2 door, self-close	1651 x 1092 x 457 mm	1537 x 1003 x 370 mm		FM,N,O,A,I	894524	301/137
60/227	2 door, manual	65 x 34 x 34 in	60.5 x 30.75 x 30.34 in		FM,N,O,A,	896004	386/175
	2 door, self-close	1651 x 864 x 864 mm	1537 x 781 x 771 mm		FM,N,O,A,I	896024	399/181
90/341*	2 door, manual	65 x 43 x 34 in	60.5 x 39.5 x 30.34 in	FM,N,O,A,	899004	454/206	
	2 door, self-close	1651 x 1092 x 864 mm	1537 x 1003 x 771 mm	FM,N,O,A,I	899024	457/207	

\*OSHA 29CFR 1910.106(d)(3) states that not more than 60 gallons (227L) of Category 1, 2, or 3 flammable liquids, nor more than 120 gallons (454L) of Category 4 flammable liquids may be stored in a safety cabinet.

### Extra Accessories

Description	Fits Cabinet Styles	Dimensions W x D	Shelf & Tray Model No	Shelf Only Model No	Tray Only Model No	Ship Wt lb/kg
SpillSlope® steel shelf	12 gallon (45 L) compac	19.625 x 14 in (498 x 356 mm)	29959	29936	29968	9/4
SpillSlope® steel shelf	30 & 45 gallon (114 & 170 L) - 43 in W (1092 mm)	39.375 x 14 in (1000 x 356 mm)	29958	29937	29962	11/5
SpillSlope® steel shelf	60 gallon (227 L) - 34 in W (864 mm)	30.375 x 29 in (771 x 737 mm)	29980	29944	29961	20/9
SpillSlope® steel shelf	90 gallon (341 L) - 43 in W (1092 mm)	39.375 x 29 in (1000 x 737 mm)	—	29945	29972	21/10



Segregate and identify hazardous materials to ensure a safe working environment.



Encased self-closing mechanism provides obstruction-free access to top shelf space. Fusible link melts at 165°F (74°C) to automatically close door(s) under fire conditions.

## Safety Cabinets for Hazardous Materials **NEW**

Identify and safely store hazardous materials such as acids, bases, oxidizers, or toxic materials

High-performance cabinets feature all-welded, 18-gauge (1-mm) double-walled steel construction with 1½-inch (38-mm) air space, a 2-inch (51-mm) leakproof sump, U-Loc™ handle, dual vents with flame arresters, adjustable self-leveling feet, and ground wire connector. Application-specific labels identify contents to safely store and segregate incompatible chemicals.

Self-closing door(s) with a three-point, stainless steel bullet latching system securely close for maximum protection under fire conditions. They self-index and self-latch to close in sequence to ensure a tight closure from top to bottom.

For increased chemical resistance against leaks or drips, steel SpillSlope® adjustable shelves include a polyethylene tray that sits on top of the shelf, as well as a separate polyethylene liner for the bottom sump. The popular 30-gal (114-L) cabinet includes an extra polyethylene work tray that can be placed on top of cabinet for a handy work surface.

Cabinets are FM approved (except for 4-gal /15-L models), and come with a ten-year warranty.



Capacity Gallons/Liters	Number of Doors and Style	Dimensions H x W x D		Adjustable Shelves	Approv/Lstg Regulation	Sure-Grip® Model No	Ship Wt lb/kg
		Exterior	Interior				
<b>Classic Safety Cabinets</b>							
30/114	2 door, self-close	44 x 43 x 18 in 1118 x 1092 x 457 mm	39.625 x 39.5 x 14.56 in 1006 x 1003 x 370 mm	1	FM,H,A,I	863028	240/109
45/170	2 door, self-close	65 x 43 x 18 in 1651 x 1092 x 457 mm	60.5 x 39.5 x 14.56 in 1537 x 1003 x 370 mm	2		864528	303/137
60/227	2 door, self-close	65 x 34 x 34 in 1651 x 864 x 864 mm	60.5 x 30.75 x 30.34 in 1537 x 781 x 771 mm			866028	370/168
90/341	2 door, self-close	65 x 43 x 34 in 1651 x 1092 x 864 mm	60.5 x 39.5 x 30.34 in 1537 x 1003 x 771 mm	869028		436/198	
<b>Countertop Safety Cabinet</b>							
4/15	1 door, self-close	22 x 17 x 17 in 559 x 432 x 432 mm	18.5 x 13.75 x 13.75 in 470 x 349 x 349 mm	1	H,A,I	860428	69/31
<b>Compac Safety Cabinets</b>							
12/45	1 door, self-close	35 x 23.25 x 18 in 889 x 591 x 457 mm	30.5 x 20 x 14.56 in 775 x 508 x 370 mm	1	FM,H,A,I	861228	123/56
15/57	1 door, self-close	44 x 23.25 x 18 in 1118 x 591 x 457 mm	39.625 x 20 x 14.56 in 1006 x 508 x 370 mm			861528	156/70
<b>Piggyback Safety Cabinets</b>							
12/45	2 door, self-close	18 x 43 x 18 in 457 x 1092 x 457 mm	13 x 39.5 x 14.56 in 330 x 1003 x 370 mm	0	FM,H,A,I	861328	132/60
17/64	2 door, self-close	24 x 43 x 18 in 610 x 1092 x 457 mm	19.5 x 39.5 x 14.56 in 495 x 1003 x 370 mm	1		861728	174/79
<b>Slimline Safety Cabinets</b>							
22/83 (standard)	1 door, self-close	65 x 23.25 x 18 in 1651 x 591 x 457 mm	60.5 x 20 x 14.56 in 1537 x 508 x 370 mm	3	FM,H,A,I	862228	211/96
54/204 (deep)	1 door, self-close	65 x 23.25 x 34 in 1651 x 591 x 864 mm	60.5 x 20 x 30.34 in 1537 x 508 x 771 mm			865428	314/142
<b>Undercounter Safety Cabinet</b>							
22/83	2 door, self-close	35 x 35 x 22 in 889 x 889 x 559 mm	27.375 x 31.75 x 18.75 in 695 x 806 x 476 mm	1	FM,H,A,I	862328	197/89

Accessories - For extra shelves, see page 31.



See page 2 for Approval and Compliance Key

justritefm.com

## ChemCor® Lined Safety Cabinets **NEW** for Hazardous Materials

*Seamless ChemCor® finish protects interior cabinet surfaces from rust and corrosion*

For superior protection against corrosion from drips and off-gassing from harsh chemicals, use ChemCor® lined safety cabinets. They feature a unique, flame-coated thermoplastic finish on interior doors, shelves, walls, ceiling, and sump. The non-porous, seam-free surface eliminates the need for corrosion-prone rivets or fasteners. It resists staining and cleans up easily. Popular 30-gal (114-L) cabinet includes a separate polyethylene work tray that can be placed on top of cabinet for a handy work surface.

Cabinets are FM approved (except for 4-gal/15-L models), and come with a ten-year warranty.



Store small quantities of hazardous materials at point-of-use for quick and easy access.



**Global Protection**  
Justrite products are available worldwide.  
For pricing and availability, simply contact the authorized distributor nearest you.



Label pack includes ten content specific labels.



Capacity Gallons/Liters	Number of Doors and Style	Dimensions H x W x D		Adjustable Shelves	Approv/Lstg Regulation	Sure-Grip® Model No	Ship Wt lb/kg
		Exterior	Interior				
<b>Classic Safety Cabinets</b>							
30/114	2 door, self-close	44 x 43 x 18 in 1118 x 1092 x 457 mm	39.625 x 39.5 x 14.56 in 1006 x 1003 x 370 mm	1	FM,H,A,I	8630282	251/114
45/170	2 door, self-close	65 x 43 x 18 in 1651 x 1092 x 457 mm	60.5 x 39.5 x 14.56 in 1537 x 1003 x 370 mm	2		8645282	322/146
60/227	2 door, self-close	65 x 34 x 34 in 1651 x 864 x 864 mm	60.5 x 30.75 x 30.34 in 1537 x 781 x 771 mm			8660282	400/181
<b>Countertop Safety Cabinet</b>							
4/15	1 door, self-close	22 x 17 x 17 in 559 x 432 x 432 mm	18.5 x 13.75 x 13.75 in 470 x 349 x 349 mm	1	H,A,I	8604282	70/32
<b>Compac Safety Cabinets</b>							
12/45	1 door, self-close	35 x 23.25 x 18 in 889 x 591 x 457 mm	30.5 x 20 x 14.56 in 775 x 508 x 370 mm	1	FM,H,A,I	8612282	137/62
<b>Piggyback Safety Cabinets</b>							
12/45	2 door, self-close	18 x 43 x 18 in 457 x 1092 x 457 mm	13 x 39.5 x 14.56 in 330 x 1003 x 370 mm	0	FM,H,A,I	8613282	142/64
17/64	2 door, self-close	24 x 43 x 18 in 610 x 1092 x 457 mm	19.5 x 39.5 x 14.56 in 495 x 1003 x 370 mm	1		8617282	175/79
<b>Slimline Safety Cabinets</b>							
22/83 (standard)	1 door, self-close	65 x 23.25 x 18 in 1651 x 591 x 457 mm	60.5 x 20 x 14.56 in 1537 x 508 x 370 mm	3	FM,H,A,I	8622282	211/96
<b>Undercounter Safety Cabinet</b>							
22/83	2 door, self-close	35 x 35 x 22 in 889 x 889 x 559 mm	27.375 x 31.75 x 18.75 in 695 x 806 x 476 mm	1	FM,H,A,I	8623282	199/90

Accessories - For extra shelves, see page 31.



Safely store corrosives in fire-resistant steel safety cabinets.

## Sure-Grip® EX Classic Safety Cabinets for Corrosives

*Specially designed for safely storing corrosives in laboratories*

- Protect laboratories and personnel from damaging corrosives.
- Powder-coat finish specially formulated to resist acids, bases and solvents.

Justrite blue steel safety cabinets for corrosives have the same quality safety features as the cabinets for flammables. All models come with double-wall construction, dual vents, grounding wire connections, adjustable shelves, leakproof sills, three-point self-latching doors and leveling feet. Polyethylene trays fit over galvanized steel shelves and a separate polyethylene liner for the bottom sump helps resist aggressive chemicals. Easily remove the liner for quick cleaning of drips and leaks. The popular 30-gallon (114-L) 2-door cabinets also include an extra polyethylene work tray that can be secured to cabinet top for a handy work surface. An all epoxy baked-on powder-coat finish, inside and out, provides increased chemical resistance. FM-approved.



**Using non-flammable corrosives?**  
See page 55 for quick pouring, translucent polyethylene containers designed to resist acids and caustics.

**Global Protection**  
Justrite products are available worldwide. For pricing and availability, simply contact the authorized distributor nearest you.



894502



893002



Capacity Gallons/Liters	Number of Doors and Style	Dimensions H x W x D		Adjustable Shelves	Approv/Lstg Regulation	Sure-Grip® Model No	Ship Wt lb/kg
		Exterior	Interior				
30/114	2 door, manual	44 x 43 x 18 in 1118 x 1092 x 457 mm	39.625 x 39.5 x 14.562 in 1006 x 1003 x 370 mm	1	FM,A9	893002	239/108
	2 door, self-close				FM,A9	893022	240/109
	1 bi-fold sliding door, self-close				FM,A9	893082	246/112
	2 door, manual	35 x 36 x 24 in 889 x 914 x 610 mm	30.625 x 32.625 x 21.75 in 778 x 829 x 552 mm		FM,A9	893302	215/98
45/170	2 door, manual	65 x 43 x 18 in 1651 x 1092 x 457 mm	60.5 x 39.5 x 14.562 in 1537 x 1003 x 370 mm	2	FM,A9	894502	301/137
	2 door, self-close				FM,A9	894522	303/137
	1 bi-fold sliding door, self-close				FM,A9	894582	323/147
	2 door, manual	65 x 34 x 34 in 1651 x 864 x 864 mm	60.5 x 30.75 x 30.34 in 1537 x 781 x 771 mm		FM,A9	896002	388/176
2 door, self-close	FM,A9			896022	370/168		
1 bi-fold sliding door, self-close	FM,A9			896082	400/181		
90/341	2 door, manual	65 x 43 x 34 in 1651 x 1092 x 864 mm	60.5 x 39.5 x 30.34 in 1537 x 1003 x 771 mm	2	FM,A9	899002	454/206
	2 door, self-close				FM,A9	899022	456/207
	1 bi-fold sliding door, self-close				FM,A9	899082	460/209

Accessories—see page 31.

**Sure-Grip® EX Slimline Cabinets for Corrosives**

*Compact footprint offers versatile storage options*

Use Slimline-style cabinets to expand storage capacity—modular size fits nicely alongside existing cabinets. They have all the same features as the larger corrosive safety cabinets including a three-point, self-latching door with U-Loc™ handle, a 2-in (51-mm) leakproof sump, and dual vents with integral flame arresters. For increased corrosion protection, cabinets include polyethylene trays that fit on top of three galvanized steel shelves. Under fire conditions when illuminated by a flashlight, highly reflective Haz-Alert™ warning labels shine brightly to alert emergency personnel to corrosive contents. FM-approved.



Small footprint of Slimline-style cabinets fits the tightest spaces.



Capacity Gallons/Liters	Number of Doors and Style	Dimensions H x W x D		Adjustable Shelves	Approv/Lstg Regulation	Sure-Grip® Model No	Ship Wt lb/kg
		Exterior	Interior				
<b>Slimline Safety Cabinets</b>							
22/83 (standard)	1 door, manual	65 x 23.25 x 18 in 1651 x 591 x 457 mm	60.5 x 20 x 14.56 in 1537 x 508 x 370 mm	3	FM,A9	892202	208/94
	1 door, self-close				FM,A9	892222	210/95
54/204 (deep)	1 door, manual	65 x 23.25 x 34 in 1651 x 591 x 864 mm	60.5 x 20 x 30.34 in 1537 x 508 x 771 mm		FM,A9	895402	298/135
	1 door, self-close				FM,A9	895422	314/142

Accessories—see page 31.

**Sure-Grip® EX Countertop and Compac Cabinets for Corrosives**

*Make the most of your available space*

Countertop and compac cabinets let you customize your work areas and keep your most frequently used fluids close at hand. These specialty cabinets have the same features as our larger cabinets plus galvanized steel shelves with attached polyethylene trays and a separate polyethylene bottom sump liner that can be easily removed for cleaning drips and leaks. Baked-on blue epoxy powder-coat finish—inside and out—resists acids, bases and solvents for added chemical resistance. Compac cabinets are FM-approved.



Capacity Gallons/Liters	Number of Doors and Style	Dimensions H x W x D		Adjustable Shelves	Approv/Lstg Regulation	Sure-Grip® Model No	Ship Wt lb/kg
		Exterior	Interior				
4/15	1 door, manual, countertop	22 x 17 x 17 in 559 x 432 x 432 mm	18.5 x 13.75 x 13.75 in 470 x 349 x 349 mm	1	A9	890402	63/29
	1 door, self-close, countertop				A9	890422	65/30
12/45	1 door, manual, compac	35 x 23.25 x 18 in 889 x 591 x 457 mm	30.5 x 20 x 14.562 in 775 x 508 x 370 mm		FM,A9	891202	121/55
	1 door, self-close, compac				FM,A9	891222	123/56
15/57	compac; 1 door manual	44 x 23.25 x 18 in 1118 x 591 x 457 mm	39.625 x 20 x 14.56 in 1006 x 508 x 370 mm		FM,A9	891502	154/70
	compac; 1 door self-close				FM,A9	891522	156/71

Accessories—see page 31.





Easily expand existing storage capacity by mounting piggyback cabinet on top of Justrite's 30- or 45-gallon cabinet.

**Sure-Grip® EX Piggyback Cabinets for Corrosives**

*Use on bench tops or add to taller cabinets to meet increased storage needs*

- Add up to 17-gallons (64-L) of additional capacity to existing cabinets.
- Compact design for easy stacking.

Create a safe storage area for acids or bases without taking up valuable floor space. Piggyback cabinets are designed to mount on top of 30- and 45-gallon (114- and 170-L), manual or self-closing Sure-Grip® EX cabinets. They can also be used independently and stack easily to provide additional storage. Turn it into a wall-mount cabinet with optional wall hanger assembly No. 25950.

The piggyback cabinets offer the same protection as Justrite's taller safety cabinets for corrosives. Constructed of sturdy 18-gauge (1-mm) thick double-wall, welded steel, they feature 3-point, self-latching doors that close easily and securely for maximum protection under fire conditions. Leakproof 2-in (51-mm) sump captures dangerous spills. U-Loc™ handle includes double key set and accepts optional padlock for increased security. FM-approved.



**Free survey promotes workplace safety . . .**

*Justrite's STUD-E™ survey identifies ways to do your job safely and efficiently—visit [justritemfg.com](http://justritemfg.com) to learn more and sign up.*



891702 stacked



891722



891302



Capacity Gallons/Liters	Number of Doors and Style	Dimensions H x W x D		Adjustable Shelves	Approv/Lstg Regulation	Sure-Grip® Model No	Ship Wt lb/kg
		Exterior	Interior				
12/45	2 door, manual	18 x 43 x 18 in	13 x 39.5 x 14.562 in	0	FM,A9	891302	130/59
	2 door, self-close	457 x 1092 x 457 mm	330 x 1003 x 370 mm				
17/64	2 door, manual	24 x 43 x 18 in	19.5 x 39.5 x 14.562 in	1	FM,A9	891702	149/68
	2 door, self-close	610 x 1092 x 457 mm	495 x 1003 x 370 mm				
					FM,A9	891722	151/69

Accessories—see page 31.

**Global Protection**  
*Justrite products are available worldwide. For pricing and availability, simply contact the authorized distributor nearest you.*



## Sure-Grip® EX Undercounter Cabinets for Corrosives

Take advantage of unused undercounter space

- Double-wall 18-gauge (1-mm) construction with 1-1/2-in (38-mm) insulating air space.
- Leakproof 2-in (51-mm) sump safely captures spills.
- U-Loc™ handle includes double key—accepts optional padlock for increased security.

Safely store corrosives under a workbench or lab counter for quick and easy access. These safety cabinets incorporate the same quality features as Justrite flammable cabinets but also include galvanized steel shelves with attached polyethylene trays and a separate polyethylene bottom sump liner that can be easily removed for cleaning drips and leaks. Toe kick allows user to stand closer to counter—less leaning and better ergonomics. Toe kick dimensions are 3.5 in (89 mm) H x 2.5 in (64 mm) D. Baked-on blue epoxy powder-coat finish—inside and out—resists acids, bases and solvents for added chemical resistance. FM-approved.



Self-latching doors include paddle handle with cylinder lock and keys.



Capacity Gallons/Liters	Number of Doors and Style	Dimensions H x W x D		Adjustable Shelves	Approval/Lstg Regulation	Sure-Grip® Model No	Ship Wt lb/kg
		Exterior	Interior				
22/83	2 door, manual	35 x 35 x 22 in	27.375 x 31.75 x 18.75 in	1	FM,A9	892302	209/95
	2 door, self-close	889 x 889 x 559 mm	695 x 806 x 476 mm		FM,A9	892322	212/96

## Extra Accessories

Equip your safety cabinet with accessories for storage versatility

- For dark blue hazardous material cabinets on pages 26-27.
- For light blue corrosive cabinets on pages 28-31.

Justrite galvanized steel shelves hold up to 350-lb (159-kg) and adjust on 3-in (76-mm) centers to meet specific workflow needs. Customize your cabinet by adding shelves to increase storage space and accommodate different sized containers. Place polyethylene trays over shelves for corrosion protection when storing corrosive liquids. Three options are available—combination shelf with poly tray, shelf alone or poly tray alone.

Save floor space and use optional wall hanger assembly on smaller cabinets when wall mounting is desirable. Two kits are available—for 4-gallon (15-liter) and 12- and 17-gallon (45- and 64-liter) Justrite safety cabinets.



Description	Fits Cabinet Styles	Dimensions W x D	Shelf & Tray Model No	Shelf Only Model No	Tray Only Model No	Ship Wt lb/kg
SpillSlope® steel shelf	4 gallon (15 L) countertop	13.375 x 13 in (340 x 330 mm)	29973	29935	25934	5/2
SpillSlope® steel shelf	12 & 15 gallon (45 & 57 L) compact 22 gallon (83 L) slim	19.625 x 14 in (498 x 356 mm)	29959	29936	29968	9/4
SpillSlope® steel shelf	22 gallon (83 L) undercounter	31.556 x 18 in (802 x 457 mm)	29960	29939	29965	14/6
SpillSlope® steel shelf	17, 30 & 45 gallon (64, 114 & 170 L) - 43 in W (1092 mm)	39.375 x 14 in (1000 x 356 mm)	29958	29937	29962	11/5
SpillSlope® steel shelf	54 gallon (204 L) deep slimline	19.625 x 29 in (498 x 737 mm)	—	29941	29907	11/5
SpillSlope® steel shelf	60 gallon (227 L) - 34 in W (864 mm)	30.375 x 29 in (771 x 737 mm)	29980	29944	29961	20/9
SpillSlope® steel shelf	90 gallon (341 L) - 43 in W (1092 mm)	39.375 x 29 in (1000 x 737 mm)	—	29945	29972	—
Wall mount kit	4 gallon (15 L) countertop	—	25951	—	—	4/2
Wall mount kit	12 & 17 gallon (45 & 64 L) piggyback	—	25950	—	—	5/3
Tray for cabinet top	17, 30 & 45 gallon (64, 114 & 170 L) - 43 in W (1092 mm)	43.5625 x 18.5625 in (1106 x 471 mm)	—	—	25933	6/3

Description	Dimensions W x D	Model No	Ship Wt lb/kg
Label pack (replacement/retrofit) with "Hazardous—Keep Fire Away" warning and 10 content ID labels	—	29017	1/0.45
Single label: "Lithium-Ion Battery Storage Cabinet"	12 in W x 3.5 in H (305 x 89 mm)	29018	1/0.45



Thermoplastic coating provides superior protection against corrosion from drips and off-gassing from harsh chemicals.



8837272



8831022



8849022

## ChemCor® Lined Safety Cabinets for Corrosives

**Superior corrosion protection combined with fire protection in a single cabinet**

- 100% seamless thermoplastic coating inside the cabinet.
- Double-wall, 18-gauge (1-mm) welded steel construction.
- 2-in (51-mm) leakproof containment sump.

Get complete protection from harsh acids and corrosive chemicals plus the durability and fire protection of Justrite steel cabinets in a single unit. Unique, flame-coated, nonporous thermoplastic coating lines walls, ceiling, sump, inside doors, and shelves for superior protection from rust and corrosion. Specifically formulated powder-coat finish on cabinet exterior provides long life and extra resistance to deterioration from harsh chemicals.

All ChemCor® Cabinets include two labels—“Base” or reflective Haz-Alert™ “Acid”—to be placed by the end user. SpillSlope® shelves adjust on 3-in (77-mm) centers to accommodate a wide variety of containers. Three-point stainless steel bullet latch provides fail-safe, positive door closure. U-Loc™ handle comes with double key set and accepts optional padlock for added security. Other features include dual vents with flame arresters, grounding connector, and adjustable leveling feet.

**Under fume hood cabinets** feature a 4-in (102-mm) high x 3-in (77-mm) deep toe kick that allows the user to stand closer to the hood which means less leaning and better ergonomics. Cabinet height of 35-3/4-in (908-mm) includes leg levelers installed and extended 5/8-in (15.9-mm).

**Under counter (22-gal/83-L) free-standing cabinets** feature a smaller toe kick that measures 3-1/2-in (89-mm) high x 2-1/2-in (64-mm) deep. Free standing 30-gallon (114-L) models No. 8930022 and 8930222 include an extra polyethylene work tray which can be used as a handy work surface on the top of the cabinet.



1. Internal ChemCor® coating guards against deterioration from spills and off-gassing from harsh chemicals. Seam-free, non-porous surface resists stains and cleans easily.

2. Fusible link on self-closing models melts in the event of a fire to automatically close doors if inadvertently left open.

## ChemCor® Lined Under Fume Hood Acid Cabinets



Capacity Gal/L	Number of Doors and Style	Dimensions H x W x D		Adjustable Shelves	Approv/Lstg Regulation	Silver Model No	Blue Model No	Lt Neutral Model No	Ship Wt lb/kg
		Exterior	Interior						
15/57	1 door, right hinge, manual	35.75 x 24 x 21.625 in 908 x 610 x 549 mm	26.531 x 20.77 x 18.327 in 674 x 528 x 466 mm	1	FM,A9	8825042	8825022	8825072	135/61
	1 door, left hinge, manual				FM,A9	8825142	8825122	8825172	
	1 door, right hinge, self-close				FM,A9	8825242	8825222	8825272	136/62
	1 door, left hinge, self-close				FM,A9	8825342	8825322	8825372	
19/72	2 door, manual	35.75 x 30 x 21.625 in 908 x 762 x 549 mm	26.531 x 26.77 x 18.327 in 674 x 680 x 466 mm	1	FM,A9	8831042	8831022	8831072	176/80
	2 door, self-close				FM,A9	8831242	8831222	8831272	176/80
23/87	2 door, manual	35.75 x 36 x 21.625 in 908 x 914 x 549 mm	26.531 x 32.77 x 18.327 in 674 x 832 x 466 mm	1	FM,A9	8837042	8837022	8837072	186/84
	2 door, self-close				FM,A9	8837242	8837222	8837272	187/85
31/117	2 door, manual	35.75 x 48 x 21.625 in 908 x 1219 x 549 mm	26.531 x 44.77 x 18.327 in 674 x 1137 x 466 mm	1	FM,A9	8849042	8849022	8849072	240/109
	2 door, self-close				FM,A9	8849242	8849222	8849272	

## ChemCor® Lined Acid Cabinets - Free Standing



Capacity Gallons/Liters	Number of Doors and Style	Dimensions H x W x D		Adjustable Shelves	Color	Approv/Lstg Regulation	Model No	Ship Wt lb/kg
		Exterior	Interior					
30/114	2 door, manual	44 x 43 x 18 in 1118 x 1092 x 457 mm	39.625 x 39.5 x 14.562 in 1006 x 1003 x 370 mm	1	Blue	FM,A9	8930022	241/109
	2 door, self-close					FM,A9	8930222	251/114
	1 bi-fold sliding, self-close					FM,A9	8930822	246/112
45/170	2 door, manual	65 x 43 x 18 in 1651 x 1092 x 457 mm	60.5 x 39.5 x 14.562 in 1537 x 1003 x 370 mm	2	Blue	FM,A9	8945022	323/147
	2 door, self-close					FM,A9	8945222	322/146
	1 bi-fold sliding, self-close					FM,A9	8945822	325/147
60/227	2 door, manual	65 x 34 x 34 in 1651 x 864 x 864 mm	60.5 x 30.75 x 30.34 in 1537 x 781 x 771 mm	2	Blue	FM,A9	8960022	388/176
	2 door, self-close					FM,A9	8960222	400/181

### Slimline Safety Cabinets

22/83	1 door, manual	65 x 23.25 x 18 in 1651 x 591 x 457 mm	60.5 x 20 x 14.562 in 1537 x 508 x 370 mm	3	Blue	FM,A9	8922022	211/96
	1 door, self-close					FM,A9	8922222	214/97

### Countertop and Compac Safety Cabinets

4/15	1 door, manual, countertop	22 x 17 x 17 in 559 x 432 x 432 mm	18.5 x 13.75 x 13.75 in 470 x 349 x 349 mm	1	Blue	A9	8904022	68/31
	1 door, self-close, countertop					A9	8904222	70/32
12/45	1 door, manual, compac	35 x 23.25 x 18 in 889 x 591 x 457 mm	30.5 x 20 x 14.562 in 775 x 508 x 370 mm	1	Blue	FM,A9	8912022	137/62
	1 door, self-close, compac					FM,A9	8912222	137/62

### Undercounter Safety Cabinets

22/83	2 door, manual	35 x 35 x 22 in 889 x 889 x 559 mm	27.375 x 31.75 x 18.75 in 695 x 806 x 476 mm	1	Blue	FM,A9	8923022	200/91
	2 door, self-close					FM,A9	8923222	199/90

### Piggyback Safety Cabinets

12/45	2 door, manual	18 x 43 x 18 in 457 x 1092 x 457 mm	13 x 39.5 x 14.562 in 330 x 1003 x 370 mm	0	Blue	FM,A9	8913022	137/62
	2 door, self-close					FM,A9	8913222	142/64
17/64	2 door, manual	24 x 43 x 18 in 610 x 1092 x 457 mm	19.5 x 39.5 x 14.562 in 495 x 1003 x 370 mm	1	Blue	FM,A9	8917022	171/78
	2 door, self-close					FM,A9	8917222	175/79

## Extra Accessories

Description	Fits Cabinet Styles	Dimensions W x D	Model No	Ship Wt lb/kg
ChemCor® SpillSlope® steel shelf	15 gallon (57 L) under fume hood	20.125 x 18 in (511 x 457 mm)	29934	12/5
ChemCor® SpillSlope® steel shelf	19 gallon (72 L) under fume hood	26.125 x 18" (664 x 457 mm)	29930	13/6
ChemCor® SpillSlope® steel shelf	23 gallon (87 L) under fume hood	32.5 x 18" (826 x 457 mm)	29940	11/5
ChemCor® SpillSlope® steel shelf	31 gallon (117 L) under fume hood	44.333 x 18" (1130 x 457 mm)	29948	16/7



**For protection when storing harsh, non-flammable corrosives . . .**

Justrite's 100% polyethylene cabinets are the solution—available for undercounter or countertop use. See page 34 for details.

### Global Protection

Justrite products are available worldwide. For pricing and availability, simply contact the authorized distributor nearest you.





Store harsh acids under a counter for safe, convenient access.

**Polyethylene Acid Cabinets**

*One-piece construction provides excellent resistance to harsh acids and corrosives*

These blue, hollow-bodied, polyethylene cabinets withstand highly corrosive acids and offer maximum protection against chemical corrosion and leaks. Both models are clearly labeled for ACID contents and accept a padlock (not included) for added security.

**Countertop Cabinet** stores up to two 1-quart (4-L) bottles. Door can be hinged from either side for best worktop space utilization. Polyethylene spill tray inside contains leaks and can be removed for easy cleaning. A separate polyethylene tray stores under the cabinet and can be used as a handy work tray.

**Undercounter Cabinet** holds up to thirty 1-quart (4-L) containers. Two segregated compartments each with an adjustable shelf let you store a variety of containers while recessed area in both doors hold small containers. Two removable sumps slide out for easy cleaning of incidental spills. Two vent holes (with removable caps) at rear accommodate pressurized vapor removal systems.



**Global Protection**  
 Justrite products are available worldwide.  
 For pricing and availability, simply contact  
 the authorized distributor nearest you.

**Free expert advice . . .**

*Learn more about handling flammables and corrosives by visiting [justritemfg.com](http://justritemfg.com). You'll find our RedBook guide, videos, TechTalks and more.*



24160



24040



Compact design offers placement on lab counters for access to frequently used chemicals.

Capacity	Number of Doors and Style	Exterior Dimensions H x W x D	Adjustable Shelves	Model No	Ship Wt lb/kg
Two, 4-liter bottles	1 door, countertop	19.5 x 14.25 x 16.25 in 495 x 362 x 413 mm	–	24040	31/14
Thirty, 1-liter bottles	2 door, undercounter	35 x 36 x 23.5 in 889 x 914 x 597 mm	2	24160	130/59

## Wood Laminate Acid Cabinets

### Durable and highly chemical-resistant

Safely store highly corrosive liquids such as phenol, nitric acid and sulfuric acid in these wood laminate storage cabinets. Long lasting wood construction along with stainless steel handles and hinges provide exceptional resistance to corrosion from harsh acids. Shelf adjusts on 1-1/4-in (32-mm) centers to accommodate a wide variety of containers. Cabinets include adjustable leg levelers, Haz-Alert™ reflective labels, and double key set for safety and security.

Countertop model 24120 is ideal for smaller quantities used at workbench level. Use the undercounter model 24140 as a free standing piece. It includes a removable, easy-to-clean polyethylene work surface top that is recessed 5/8-in (16-mm) to help contain incidental leaks.



Capacity	Number of Doors and Style	Dimensions H x W x D		Adjustable Shelves	Model No	WHS	Ship Wt lb/kg
		Exterior	Interior				
Six, 2.5 liter bottles	2 door, countertop	18.5 x 24 x 16 in 470 x 610 x 406 mm	17 x 22.488 x 15.228 in 432 x 571 x 387 mm	0	24120	-	52/24
Thirty-six, 2.5 liter bottles	2 door, stand alone	35.75 x 36 x 22 in 908 x 914 x 559 mm	29.496 x 34.488 x 20.858 in 749 x 876 x 530 mm	1	24140		181/82
Forty-nine, 2.5 liter bottles		60 x 42 x 17.875 in 1524 x 1067 x 454 mm	54.511 x 40.488 x 17.118 in 1385 x 1028 x 435 mm		24150		276/125

Note #24140 Height dimension includes 0.75-in (19-mm) top. For undercounter usage, remove top for 22-in (559-mm) depth and adjust leg levelers which extend up to 0.75-in (19-mm).

#### Extra Accessories

Description	Exterior Dimensions W x D	Model No	Ship Wt lb/kg
Wood Shelf and Clips for 24140	34 x 16.875 in (864 x 429 mm)	24168	18/8
Wood Shelf and Clips for 24150	40 x 13.875 in (1016 x 352 mm)	24167	19/9

## Solid Polyethylene Acid Cabinets

### Sturdy, smooth construction in an attractive design

- Suitable for highly aggressive liquids—no metal parts to corrode.
- Three-point door latch on larger units offer secure closure and vapor control.
- Toe kick on undercounter model allows user to stand closer to counter—less leaning, better ergonomics.



Solid polyethylene white acid cabinets have excellent chemical resistance to handle the most corrosive chemicals. A protective, all-welded bottom sump and a clean, sleek design complement any laboratory settings. Fully welded, liquid-tight 2-in (51-mm) sump contains accidental spills and makes clean up a snap. Shelf on larger units adjust on 3-in (76-mm) center. Door accepts a padlock for security.

Capacity	Number of Doors and Style	Dimensions H x W x D		Adjustable Shelves	Model No	Ship Wt lb/kg
		Exterior	Interior			
Six, 2.5 liter bottles	1 door, countertop	22 x 17 x 17 in 559 x 432 x 432 mm	21.5 x 16.5 x 16.25 in 546 x 419 x 413 mm	-	24004	26/12
Thirty-six, 2.5-liter bottles	2 door, undercounter	35.75 x 36 x 21.75 in 908 x 914 x 552 mm	35.25 x 35.5 x 20.875 in 895 x 902 x 530 mm	1	24010	160/73
Thirty-six, 2.5-liter bottles	2 door, stand alone	36.75 x 36 x 21.75 in 933 x 914 x 552 mm	35.5 x 35.5 x 20.875 in 902 x 902 x 530 mm		24015	

#### Extra Accessories

Description	Fits Cabinet Sizes	Dimensions W x D	Model No	Ship Wt lb/kg
Solid Polyethylene Shelf with Shelf Pegs	36 in (914mm) W	34.75 x 20.5 in (883 x 521 mm)	24115	20/9

**Document Storage Boxes**

*Keep your important papers readily available while protecting them from moisture and dirt*

Safely store manuals and documents in these weather-resistant polyethylene storage boxes. Each box is bright red for high visibility and features a smooth area for labels. Use the label pack provided that includes two blank labels and labels printed “SDS” and “Instruction Manual”. Boxes come with heavy-duty double-sided tape for easy installation. Large size accepts SDS binder; medium and large sized units accept padlock when security is a concern.

Ideal for storage of:

- Safety data sheets
- Instruction sheets
- Receiving bills
- Evacuation plans
- Schedules
- Plant layouts
- Inventory checklists
- Operator manuals
- Emergency contacts
- Certificates
- Medical records



Double sided tape is provided for mounting on surfaces that should not be penetrated by hardware such as safety cabinets.



**Global Protection**  
 Justrite products are available worldwide.  
 For pricing and availability, simply contact  
 the authorized distributor nearest you.

Description	Approx Interior Dimensions H x W x D	Exterior Dimensions H x W x D	Lock Hole Dia	Single Unit		Master Carton Packs			
				Model No	Ship Wt lb/kg	Qty Per Master Ctn	Model No	Ship Wt lb/kg	
Medium top opening	11.5 x 8.75 x 1.625 in 292 x 222 x 41 mm	12.5 x 10.25 x 2.25 in 318 x 260 x 57 mm	0.25 in/6 mm	S23303	2/1	20	23303	35/16	
Medium front opening	12.25 x 8.625 x 1 in 311 x 219 x 25 mm	14.5 x 11 x 2.125 in 368 x 279 x 54 mm	0.375 in/10 mm	S23304	3/1.5		23304	42/19	
Tube twist on lid	12 x 3 Dia in 305 x 76 Dia mm	12.5 x 3.75 OD in 318 x 94 OD mm	—	S23305	1/0.5		23305	11/5	
Large front opening	13.25 x 10.75 x 2.25 in 337 x 273 x 57 mm	15.75 x 13.125 x 3.625 in 400 x 333 x 90 mm	0.375 in/10 mm	S23306	4/2	10	23306	33/15	
Label pack (4 yellow labels: 2 blank and 2 printed - SDS and instruction manual)				—	—	—	20	23310	11/5

## VaporTrap™ Safety Cabinet Filter

*Improves your work environment by reducing employee's inhalation exposure to VOC's*

Install a VaporTrap™ Filter to reduce harmful VOC vapors inside your safety cabinets. Activated carbon filter medium contained in a stainless steel mesh cartridge adsorbs the volatile organic chemical vapors from cabinets storing flammable liquids. Sturdy 4-in x 5-1/2-in (102-mm x 139-mm) magnetized base offers flexible placement anywhere within the cabinet. Date notation area on label serves as a reminder for replacement; life cycle varies based upon vapor types and concentrations.

Description	Nom. Dimensions Filter L x D	Model No	Ship Wt lb/kg
VaporTrap™ Filter (2 pk.)	8.75 x 2.25 in (222 x 57 mm)	29916	4/2

Note: Due to variables such as the chemical itself, its purity, or its vapor pressure, temperature, humidity, charcoal age, etc., it is difficult to estimate VOC vapor adsorption rates. The Justrite VaporTrap™ Carbon Filter is not intended to be used as a substitute for using safe closed containers as required by OSHA and the EPA. It is important to clean up spills and residues from the cabinet and containers.



For increased safety, position one or two VaporTrap™ Filters anywhere inside the cabinet.

## Safety Cabinet Accessories

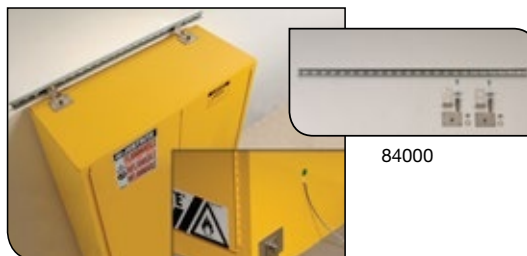
*Accessories offer organization and convenience*

**Steel Shelf Dividers** fit all Justrite cabinets with 14-in (355-mm) deep shelves. Simply place over shelf and slide into position as desired.

**Seismic Bracket Kit** provides increased stability—ideal for earthquake or hurricane prone areas. One kit secures any safety cabinet to a wall or floor. Because there are no holes created, the fire protection properties of the cabinet remain intact and the cabinet maintains FM approval.

**Leg Riser Frame** provides sturdy, stable support for easy relocation of empty cabinet with forklift or pallet jack. High leg frame makes it easy to clean underneath and keeps cabinet away from floor moisture. Includes leg levelers and safety warning label: "Forklift Only When Empty".

**Rolling Cart** makes it easy to move a heavy safety cabinet—transport solvents and chemicals directly to your work area. All welded 1/8-in (3-mm) thick heavy-duty steel and 5-in (127-mm) poly caster wheels with brakes for added safety. Push handle is removable. Fits any cabinet 43-in W x 18-in D (1092-mm x 457-mm) with a maximum height of 44-in (1118-mm).



**Prevent placing dangerous items on top of cabinet . . .**  
Add a sloped cabinet cover—ideal when working on scaffolds. Visit our website and search for model # 25987.

Description	Load Capacity lb/kg	Dimensions H x W x D	Model No	Ship Wt lb/kg
<b>Shelf dividers</b> for 30G/114L, 40G/151L, 45G/170L, 12G/45L & 15G/57L compac, 22G/83L slimline and 17G/64L piggyback	—	2 x 2.031 x 14.171 in (51 x 52 x 360 mm)	29985	5/2
<b>Shelf dividers</b> for 22G/83L undercounter	—	2 x 2.031 x 18.171 in (51 x 52 x 462 mm)	29990	5/2
<b>Leg riser frame</b> for 30G/114L and 45G/170L and fume hood cabinets 19G/72L, 23G/87L, 31G/117L	1000/454	5.25 x 43.75 x 18.75 in (133 x 1111 x 476 mm)	84002	31/14
<b>Rolling cart</b> for 30G/114L and piggyback style	500/227	42 x 43.25 x 18.25 in (1066 x 1099 x 464 mm)	84001	37/17
<b>Seismic bracket kit</b> fits all cabinet sizes	—	4 x 48 x 4 in (102 x 1219 x 102 mm)	84000	7/3





Durable, weather resistant aluminum construction offers long-lasting, safe storage of LPG and compressed gas cylinders.

**Aluminum Cylinder Lockers**

*No rust solution to storing LPG and compressed gas cylinders*

- 100% welded aluminum construction won't rust, corrode or discolor.
- Exclusive solid roof panel slants to back to shed water and ice.
- Ships fully assembled—saves set-up time.

Heavy gauge, 0.065-in (1.65-mm) thick aluminum mesh and extruded (not bent) frame add rigidity to these cylinder lockers. Wire mesh sides prevent dangerous build up of flammable gases. Heavy-duty, all welded aluminum construction provides superior strength yet is 66% lighter than steel for easy placement and handling—saves on shipping cost. Thick metal panels and welded security lug (order padlock separately) on front panel deter tampering. Aluminum naturally stands up to abusive outdoor conditions and keeps your property clean. Includes 4 labels—2 warning and full/empty cylinder identification.

Lockers meet NFPA 58 for LPG storage and OSHA 1910.110 regulations. LPG vertical lockers also comply with Canadian Standards Association CSA-B149.2.



**Global Protection**  
 Justrite products are available worldwide.  
 For pricing and availability, simply contact  
 the authorized distributor nearest you.



23007



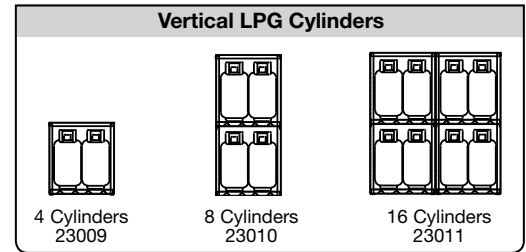
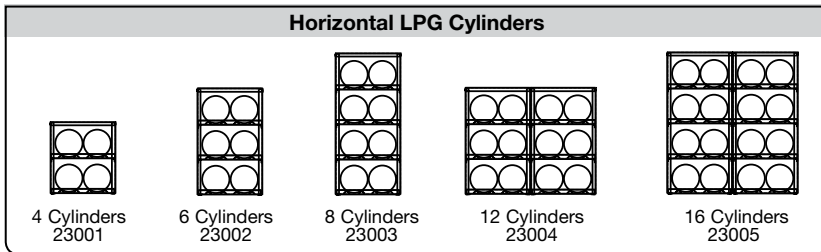
23006



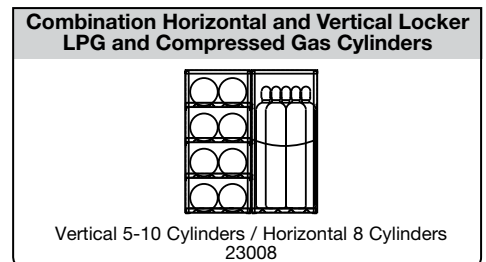
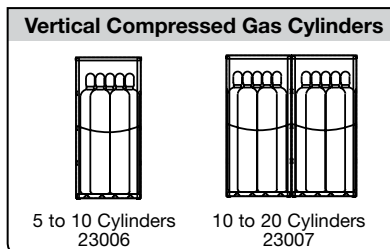
23005

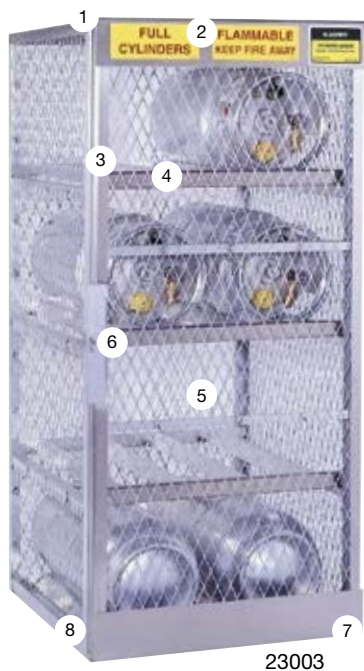


23003



**Eleven modular styles provide an efficient solution to expanded, multi-cabinet storage.**





23003

1. Sloped roof design sheds water and ice. Solid top reinforces stability.
2. Includes warning and identification labels.
3. Extruded 0.125-in (3-mm) thick, heavy aluminum framework provides superior strength.
4. Easy-to-use rack positions cylinders securely and stores 20- and 33-lb (9- and 15- kg) cylinders.
5. Heavy, expanded, 0.065-in (1.65-mm) thick aluminum mesh panels and all-welded construction resist abusive outdoor elements—won't rust or discolor.
6. Padlock lug for security.
7. A pre-drilled hole at each corner accepts 0.5-in (12.7-mm) anchor bolts for maximum security and stability.
8. Cylinders stay clear of ground with heavy-duty bottom rack on horizontal locker or strong floor plate on vertical storage locker.



23010



23008



23009



23011

Description	Cylinder Type	Capacities	Dimensions H x W x D Exterior	Racks	Model No	Ship Wt lb/kg
4-cylinder horizontal	LPG	Four 20 or 33 lb cylinders 9 or 15 kg	33.5 x 30 x 32 in 851 x 762 x 813 mm	1	23001	79/36
6-cylinder horizontal		Six 20 or 33 lb cylinders 9 or 15 kg	49.5 x 30 x 32 in 1257 x 762 x 813 mm	2	23002	97/44
8-cylinder horizontal		Eight 20 or 33 lb cylinders 9 or 15 kg	65 x 30 x 32 in 1651 x 762 x 813 mm	3	23003	114/52
12-cylinder horizontal		Twelve 20 or 33 lb cylinders 9 or 15 kg	49.5 x 60 x 32 in 1257 x 1524 x 813 mm	4	23004	178/81
16-cylinder horizontal		Sixteen 20 or 33 lb cylinders 9 or 15 kg	65 x 60 x 32 in 1651 x 1524 x 813 mm	6	23005	211/96
4-cylinder vertical		Four 20 or 33 lb cylinders 9 or 15 kg	33.5 x 30 x 32 in 851 x 762 x 813 mm	—	23009	88/40
8-cylinder vertical	Eight 20 or 33 lb cylinders 9 or 15 kg	65 x 30 x 32 in 1651 x 762 x 813 mm	1	23010	95/43	
16-cylinder vertical	Sixteen 20 or 33 lb cylinders 9 or 15 kg	65 x 60 x 32 in 1651 x 1524 x 813 mm	2	23011	204/93	
10-cylinder vertical	Compressed Gas	Up to 10 cylinders	65 x 30 x 32 in 1651 x 762 x 813 mm	—	23006	102/46
20-cylinder vertical		Up to 20 cylinders	65 x 60 x 32 in 1651 x 1524 x 813 mm	—	23007	187/85
Combo horizontal & vertical	LPG & Compressed Gas	Up to 8 horizontal and 10 vertical cylinders	65 x 60 x 32 in 1651 x 1524 x 813 mm	3	23008	198/90