

Why Do I Need a Safety Can?

Almost every place of business has occasion to use flammable liquids such as fuels, chemicals, and solvents. Whereas these liquids are relatively commonplace, it's important to understand the dangers they may present. For example, one gallon of vaporized gasoline can explode with the same force as twenty sticks of dynamite. Safety containers protect workers by minimizing the risk of accidents and fires when handling hazardous liquids.

Safety cans serve critical functions:

- Reduce the risk of fire and explosion when pouring and storing flammable liquids
- Provide compliance with federal OSHA regulations and fire codes
- Improve efficiency with ease-of-use features which enhance pouring and filling operations



Types of Safety Containers

Safety containers come in a variety of types and sizes for different applications. All are designed to applicable codes and regulations and include safety features for worker protection.

- Type I and Type II steel safety cans
- D.O.T. (Department of Transportation) safety cans
- Polyethylene safety cans
- Laboratory safety cans
- Quick-disconnect safety disposal cans
- Liquid disposal safety cans
- Oily waste cans
- Plunger and bench cans
- Dip, wash, and rinse tanks



Type I and Type II



D.O.T.



Polyethylene



Laboratory



Quick-Disconnect Disposal



Liquid Disposal



Oily Waste



Plunger and Bench



Dip and Wash

Safety Container Compliance

Justrite safety containers meet at least one or more of the following regulations:

- OSHA 1910.106
- National Fire Protection Association (NFPA) Code 30
- UN/D.O.T. 49 CFR parts 100 to 185
- National Fire Code of Canada
- NFPA Fire Code 1
- International Fire Code (IFC)
- California Air Resources Board (CARB) Title 13



Safety Container Approvals

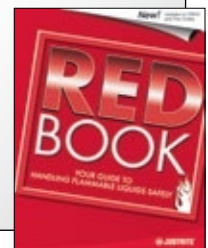
Most safety containers carry independent, third party certification from one or more of the following:

- FM Approvals
- Underwriters Laboratories
- TÜV Technical Inspection Association

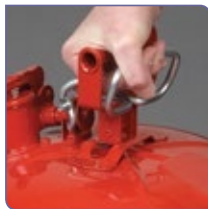


Safety expertise since 1906

Justrite offers over 300 models of safety containers to keep workers safe in different industries throughout the world. Learn more about how to choose the proper container for your need and how to properly bond and ground during liquid transfer operations—visit our website and request a free copy of our popular RedBook™... Your Guide to Handling Flammable Liquids Safely.



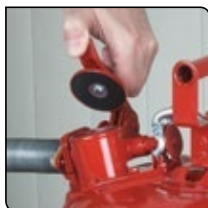
Safety in a Can!



Exclusive, vented Type II AccuFlow™ manifold with a Safe Squeeze® trigger handle provides the fastest smoothest, most controlled pouring. Patented.



Flexible 9-in (229-mm) hose on Type II AccuFlow™ offers targeted pouring into small openings.



Quick-fill port on Type II AccuFlow™ features an ergonomically designed lift lever that opens wide for easy filling.



Extra capacity in all cans accommodates oil additives for two cycle engines.



1/2-in (13-mm) grip lip along bottom supports pouring and resists accidental punctures when placed on uneven surfaces.



Stainless steel flame arrester stops flashback ignition. Long 3-1/2-in (88-mm) length offer safe secure insertion of gas nozzle.



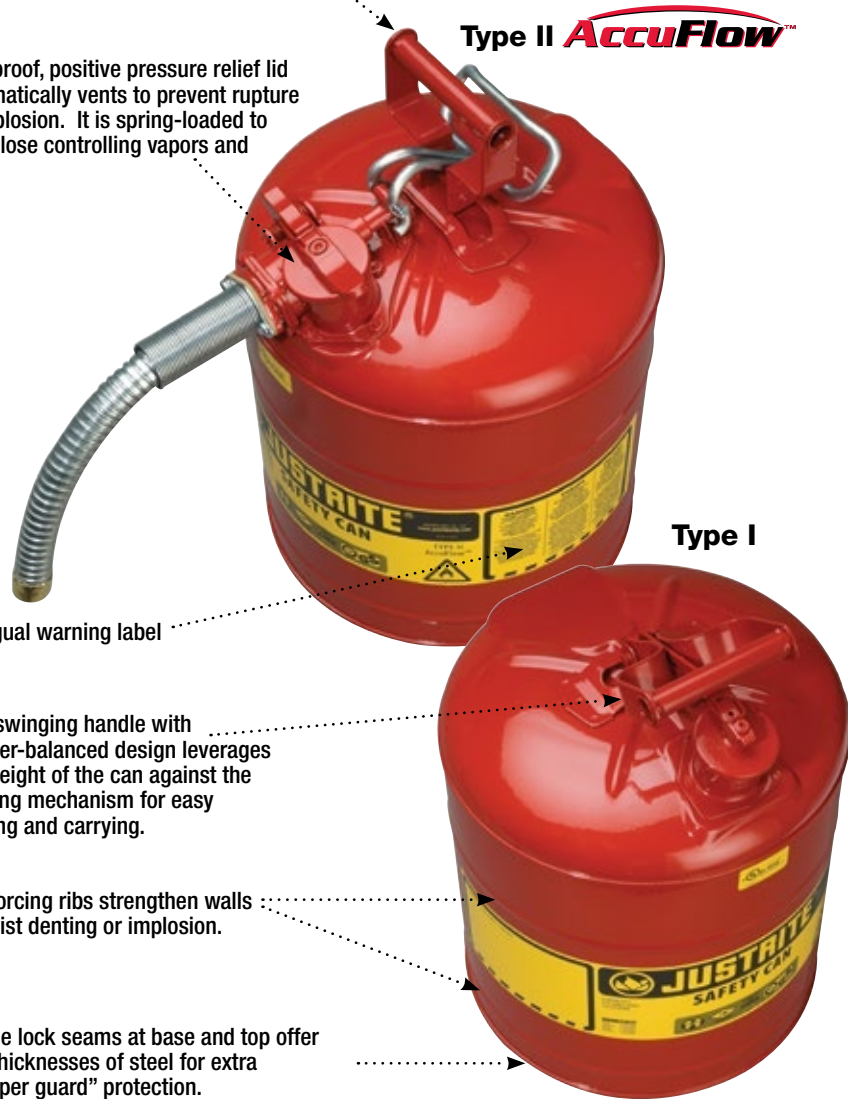
Optional 2-position polypropylene funnel for Type I cans aids in pouring and folds down for compact storage and filling.



Large ID zone permits user labeling to avoid misuse, mishaps with incompatible mixtures, or to identify owner or department.

Comfortable, rounded handle doesn't cut into hand.

Leakproof, positive pressure relief lid automatically vents to prevent rupture or explosion. It is spring-loaded to self-close controlling vapors and spills.



Type II **AccuFlow™**

Type I

Trilingual warning label

Free swinging handle with counter-balanced design leverages the weight of the can against the opening mechanism for easy pouring and carrying.

Reinforcing ribs strengthen walls to resist denting or implosion.

Double lock seams at base and top offer four thicknesses of steel for extra "bumper guard" protection.

24-gauge galvanized steel body and handle finished in an environmentally friendly, tough powder-coat finish resists solvents and stands up to abuse.

100% leak tested

Fully compliant—meets OSHA and NFPA





Swinging, full-fisted rounded handle eases carrying.

Type I Safety Cans

Self-closing, leakproof lid provides safety from spills

Designed with a single spout for filling and pouring, the sealed lid features automatic positive-pressure relief that vents between 3 and 5 psig (0.2 and 0.35 bar) to guard against rupture or explosion.

Made from high-grade coated steel, each can is tested to guarantee 100% leakproof construction. The tough powder-coat finish resists chemicals and stands up to demands of rigorous use. Each Justrite safety can is equipped with a stainless steel flame arrester which dissipates heat to stop flashback ignition. Cans up to 1-quart (1-L) feature a trigger-release handle, while larger capacities have a swinging handle to greatly ease carrying of heavier loads. Large label ID zone on swing-handle cans provides writing space to identify contents, department location, or individual user name.

Certified by FM, UL/ULC, and TÜV, Justrite safety cans also meet OSHA and NFPA requirements, and come with a ten-year warranty.

Type I Safety Can Funnel

Used to pour into smaller openings, the polypropylene funnel attaches to the spout neck of Type I safety cans sized 1-gallon (4 L) and larger. The two-position funnel folds down for when you fill or store the can, and stays up for when you pour. Large rounded bowl provides protection from splashing and spillage. Durable construction holds up to heavy use.



Convenient hinged design allows you to fill the can without removing the funnel.



10001 10101 10301



7150100 7125100 7120100 7110100



Prevent static discharge when transferring flammable liquids.
Use antistatic wires to bond and ground containers—see page 73 for a wide variety.

Description and Capacity	Dimensions OD x H	Approv/Lstg Regulation	Red Can Model No	Red Can with Funnel* Model No	Ship Wt lb/kg
Trigger Handle Type I Safety Cans					
1 pint (0.5 L) steel safety can	4.812 x 6.75 in 122 x 172 mm	FM, UL/ULC, TÜV	10001	—	2/1
1 quart (1 L) steel safety can	4.812 x 8.25 in 122 x 210 mm		10101		
1 gallon (4 L) steel safety can	7.25 x 11.5 in 184 x 292 mm	FM, UL/ULC	10301		4/2
Swinging Handle Type I Safety Cans					
1 gallon (4 L) steel safety can	9.5 x 11 in 241 x 279 mm	FM, UL/ULC, TÜV	7110100	7110110	4/2
2 gallon (7.5 L) steel safety can	9.5 x 13.75 in 241 x 349 mm		7120100	7120110	6/3
2.5 gallon (9.5 L) steel safety can	11.75 x 11.5 in 298 x 292 mm		7125100	7125110	
5 gallon (19 L) steel safety can	11.75 x 16.875 in 298 x 429 mm		7150100	7150110	8/4
Polypropylene funnel for 1 gallon (4L) and larger	0.5 x 11.25 in 13 x 286 mm	—	11202Y	—	2/1
Bolt-on funnel with galvanized hose for 1 gallon (4L) and larger	1 x 14 in 25 x 356 mm		11089		

*Approvals apply to safety can only, not funnel.



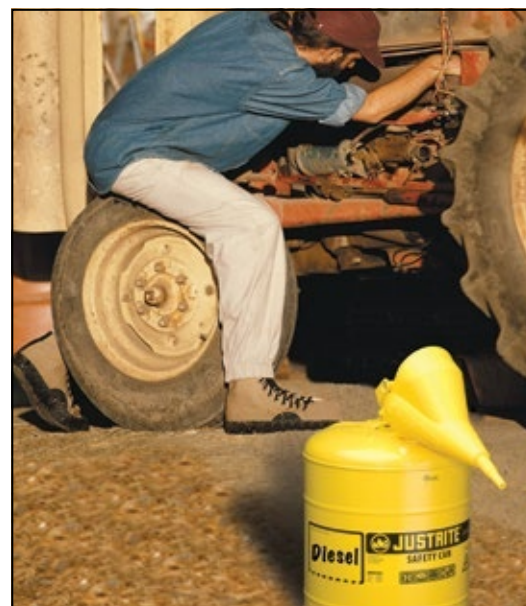
Type I Safety Cans—Optional Colors

Differentiate liquids and avoid accidental equipment damage

When working with flammable or combustible liquids, using the wrong fluid could result in equipment damage or lead to disaster. Storing fuels and chemicals in different colored safety cans help identify, organize, and segregate liquids. Colored safety cans have all the same safety benefits and high performance features found in Justrite's popular red Type I cans, including a self-closing, leakproof lid, a flame arrester to stop flashback ignition, and a large identification zone to label contents.

OSHA requires flammables with a flash point below 80°F (27C) be in a red can with yellow band. Typical industry convention is:

- ▶ **Red for Gasoline**
- ▶ **Blue for Kerosene**
- ▶ **Yellow for Diesel**
- ▶ **Green for Oil**



Safety can with 0.5-in (13-mm) diameter funnel makes it easy to pour into small openings.

Safety Can with Funnel Value Package

For added convenience when pouring into small openings, attach a polypropylene funnel to safety cans sized 1-gallon (4-liter) and larger. Unique hinged design folds down to allow filling without taking off the funnel, and stays up when pouring. Cost-saving combination pack includes can with funnel conveniently packed in one carton.



Global Protection
Justrite products are available worldwide. For pricing and availability, simply contact the authorized distributor nearest you.



ID zone permits user labeling to avoid misuse, mishaps with incompatible mixtures, or to identify owner or department.



7150300, 7150400, 7150200



7125210

7120300



Description and Capacity	Dimensions OD x H	Approv/Lstg Regulation	Yellow Can Model No	Yellow Can with Funnel* Model No	Blue Can Model No	Blue Can with Funnel* Model No	Green Can Model No	Green Can with Funnel* Model No	Ship Wt lb/kg
Trigger Handle Type I Safety Cans									
1 pint (0.5 L) steel safety can	4.812 x 6.75 in 122 x 172 mm	FM, UL/ULC, TÜV	10011	—	—	—	—	—	2/1
1 quart (1 L) steel safety can	4.812 x 8.25 in 122 x 210 mm		10111	—	—	—	—		
Swinging Handle Type I Safety Cans									
1 gallon (4 L) steel safety can	9.5 x 11 in 241 x 279 mm	FM, UL/ULC, TÜV	7110200	7110210	7110300	7110310	7110400	7110410	4/2
2 gallon (7.5 L) steel safety can	9.5 x 13.75 in 241 x 349 mm		7120200	7120210	7120300	7120310	7120400	7120410	6/3
2.5 gallon (9.5 L) steel safety can	11.75 x 11.5 in 298 x 292 mm		7125200	7125210	7125300	7125310	7125400	7125410	
5 gallon (19 L) steel safety can	11.75 x 16.875 in 298 x 429 mm		7150200	7150210	7150300	7150310	7150400	7150410	8/4

*Approvals apply to safety can only, not funnel.



Independent carrying handle doesn't interfere with pouring mechanism—no worry about accidental spills.

Type II AccuFlow™ Safety Cans

Vented design provides smooth, glug-free liquid flow

Go beyond protection and compliance with the added convenience of AccuFlow™ with Safe-Squeeze® trigger for safe and controlled pouring.

Justrite's patented manifold and proportional flow-control Safe-Squeeze® trigger provides you the means to regulate the flow rate when handling flammable liquids. Fill port with ergonomic lift lever makes filling easy. Flexible 9-in (229-mm) long metal hose spout helps control the pour into small openings.

Made from high-grade coated steel, each can is pressure tested to ensure quality. The tough powder-coat finish resists chemicals and stands up to demands of rigorous use. Stainless steel flame arrester—equipped in all Justrite safety cans—dissipates heat to stop flashback ignition. Sealed lid features automatic positive-pressure relief that vents between 3 and 5 psig (0.2 and 0.35 bar) to protect against explosion. Large label ID zone provides writing space to identify contents, department location, or individual user name. All can sizes have extra capacity for adding two-cycle engine oil or other additives.

Certified by FM, UL/ULC, and TÜV, Justrite safety cans also meet OSHA and NFPA requirements, and come with a ten-year warranty.

Easy-to-fill!

Ergonomic lift lever opens the self-closing spout wide for easy filling. A full-length stainless steel flame arrester dissipates heat and allows deeper, secure insertion of the nozzle when filling.



Description and Capacity	Hose Dimensions OD x L	Can Dimensions OD x H	Approv/Lstg Regulation	Red Can Model No	Ship Wt lb/kg
1 gallon (4 L) steel safety can with hose	0.625 x 9 in 16 x 229 mm	9.5 x 10.5 in 241 x 267 mm	FM, UL/ULC, TÜV	7210120	7/3
2 gallon (7.5 L) steel safety can with hose		9.5 x 13.25 in 241 x 337 mm		7220120	9/4
2.5 gallon (9.5 L) steel safety can with hose		11.75 x 12 in 298 x 305 mm		7225120	
5 gallon (19 L) steel safety can with hose		11.75 x 17.5 in 298 x 445 mm		7250120	11/5
2.5 gallon (9.5 L) steel safety can with hose	1 x 9 in 25 x 229 mm	11.75 x 12 in 298 x 305 mm		7225130	9/4
5 gallon (19 L) steel safety can with hose		11.75 x 17.5 in 298 x 445 mm	7250130	11/5	

Type II AccuFlow™ Safety Cans—Optional Colors

Use color safety cans to identify, organize, and segregate liquids

- Fully compliant—meets OSHA and NFPA regulations.
- FM-approved, UL/ULC Listed, and TÜV certified.

When working with flammable or combustible liquids, color-code safety cans to prevent equipment damage as a result of using the wrong fuel. Colored AccuFlow™ safety cans feature a patented manifold for safe, fast, precision pouring. They have all the same safety features as Justrite's red AccuFlow™ cans including a chemically-resistant stainless steel flame arrester to prevent flashback ignition and a self-closing, self-venting lid to control vapors and spills.

OSHA requires flammables with a flash point below 80°F (27C) be in a red can with yellow band. Typical industry convention is:

- ▶ **Red for Gasoline**
- ▶ **Blue for Kerosene**
- ▶ **Yellow for Diesel**
- ▶ **Green for Oil**



Safe-Squeeze® trigger on AccuFlow™ safety can provides finger tip control when filling up equipment.



Store & secure chemicals . . .
For security against unauthorized use, store safety cans in lockable Sure-Grip® EX safety cabinets – see page 8.

Global Protection
Justrite products are available worldwide. For pricing and availability, simply contact the authorized distributor nearest you.



7250230

AccuFlow™



7225330



7220220



7210420

100% Leak Tested



Description and Capacity	Hose Dimensions OD x L	Can Dimensions OD x H	Approv/Lstg Regulation	Yellow Can Model No	Blue Can Model No	Green Can Model No	Ship Wt lb/kg
1 gallon (4 L) steel safety can with hose	0.625 x 9 in 16 x 229 mm	9.5 x 10.5 in 241 x 267 mm	FM, UL/ULC, TÜV	7210220	7210320	7210420	7/3
2 gallon (7.5 L) steel safety can with hose		9.5 x 13.25 in 241 x 337 mm		7220220	7220320	7220420	9/4
2.5 gallon (9.5 L) steel safety can with hose		11.75 x 12 in 298 x 305 mm		7225220	7225320	7225420	
5 gallon (19 L) steel safety can with hose	11.75 x 17.5 in 298 x 445 mm	7250220		7250320	7250420	11/5	
2.5 gallon (9.5 L) steel safety can with hose	1 x 9 in 25 x 229mm	11.75 x 12 in 298 x 305 mm		7225230	7225330	7225430	9/4
5 gallon (19 L) steel safety can with hose		11.75 x 17.5 in 298 x 445 mm		7250230	7250330	7250430	11/5



Use D.O.T. cans when transporting fuel.

Type II AccuFlow™ Transport and Dispensing Cans

Heavy-duty roll-bars protect the spout from damage to prevent dangerous fuel spillage in the event of an accidental fall

- Safe travel mode for over-the-road transport of flammables.
- Usage mode for on-site fuel dispensing—FM-approved.

When traveling on the road to locations that require fuel to power equipment, safely store gasoline or diesel oil in D.O.T. compliant AccuFlow™ safety cans. The cans prevent vapor release and spills during transport by engaging the hold-down bracket with easy-to-grasp tightening screw. Bracket is tethered to the spout and features a fusible link that melts at 165°F (74°C) to prevent dangerous pressure build-up at elevated temperatures.

After fuel transport, disengage bracket to use as a safety can for dispensing and storage. Built-in safety features include internal flame arrester to dissipate heat and prevent flashback ignition, and leakproof, self-closing, auto-venting lid to control vapors and spills. Patented AccuFlow™ manifold includes air displacement vent for smooth, slug-free liquid flow. Easy-to-use flow-control Safe-Squeeze® trigger provides fast, precision pouring.

Complies with United Nations/Department of Transportation regulations. UN marking: 1A1/Y1.2/100.



1. **Travel Mode** - Attach hold down bracket to the top of the lid to prevent vapor release and spills.
2. **Fusible Link** - When in travel mode, if extreme heat or fire conditions exist, fusible link melts to allow lid to vent and relieve pressure to avoid rupture or explosion.
3. **Usage/Fill Mode** - Loosen tethered magnetic bracket and rest on top of can—no parts to lose.



Global Protection
Justrite products are available worldwide. For pricing and availability, simply contact the authorized distributor nearest you.



Description and Capacity	Hose Dimensions OD x L (mm)	Can Dimensions OD x H (mm)	Approv/Lstg Regulation	D.O.T. Red Model No	D.O.T. Yellow Model No	Ship Wt lb/kg
2.5 gallon (9.5L) D.O.T. Type II Can	0.625 x 9 in (16 x 229 mm)	11.75 x 13 in (298 x 330 mm)	FM,D.O.T.,UN	7325120	7325220	13/6
2.5 gallon (9.5L) D.O.T. Type II Can	1 x 9 in (25 x 229 mm)			7325130	7325230	
5 gallon (19L) D.O.T. Type II Can	0.625 x 9 in (16 x 229 mm)	11.75 x 18.5 in (298 x 470 mm)		7350110	7350210	16/7
5 gallon (19L) D.O.T. Type II Can	1 x 9 in (25 x 229 mm)			7350130	7350230	

Type I Poly Safety Cans

Chemical-resistant HDPE cans offer safe storage for flammable corrosives

Designed with a durable one-piece body construction, these safety cans stand up to tough acids and heat. Consistent color throughout the HDPE reduces visible scratches and provides color-resistance to reduce chemical leaching, making them suitable for most high purity liquids. The containers resist dents, punctures, and chips to withstand abusive environments. The self-closing cap, pressure-relief mechanism and flame arrester work together to prevent ignition sources from entering without restricting liquid flow in or out of the can. All cans feature stainless steel hardware and flame arrester. FM-approved.



Use smaller capacity safety cans with flame arresters to safely dispense and store chemicals found in laboratories.



Carbon Insert

A patented conductive current-carrying carbon insert is embedded into the rib of containers, completing a ground path between the cover assembly and the flame arrester. When used with a grounding strip, this provides proper grounding and prevents the creation of a static arc during filling or pouring.



14160

14065



14160 with 11201

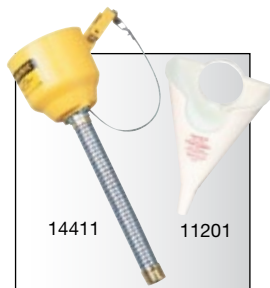
12162



14561



Description and Capacity	Dimensions W x L x H	Dimensions OD x L	Approv/Lstg Regulation	Red Model No	White Model No	Ship Wt lb/kg
0.5 gallon (2 L) oval polyethylene safety can	4.625 x 7.625 x 9.5 in 117 x 194 x 241 mm	—	FM	14065	12163	2/1
1 gallon (4 L) oval polyethylene safety can	4.625 x 7.625 x 12.75 in 117 x 194 x 324 mm			14160	12162	
2.5 gallon (9.5 L) round polyethylene safety can	10.75 x 14.25 in 273 x 362 mm		FM, UL	14261	—	4/2
5 gallon (19 L) round polyethylene safety can	12.75 x 16 in 324 x 406 mm			14561	—	9/4



14411

11201

Optional funnels aid in pouring.

Accessories

Description and Capacity	Dimensions W x L x H	Dimensions OD x L	Approv/Lstg Regulation	Model No	Ship Wt lb/kg
Polyethylene funnel for oval cans	—	0.562 x 6.5 in 14.3 x 165 mm	—	11201	1/1
Bolt-on funnel with galvanized hose for 2.5 gallon (9.5 L) and 5 gallon (19 L) cans		1 x 13.5 in 25 x 343 mm		14411	



Tilt cradle allows can to swing forward for dispensing while holding can securely on bench top.

Safety Dispensing Cans

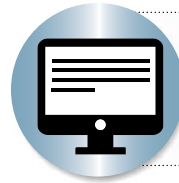
With all the benefits of our classic Type I safety cans, these cans come with faucets to make them the choice of lab professionals for safe dispensing of hazardous liquids into small flasks and beakers. Fill spouts have self-closing pressure-relief caps and stainless steel flame arresters. Self-closing faucets provide trouble-free dispensing. Cans fitted with the 08540 faucet offer more controlled dispensing, while faucet 08902 provides a greater flow. All faucets are brass except faucet model number 08919 is stainless steel.

Polyethylene Safety Dispensing Can has superb corrosion protection, and a unique current-carrying carbon insert embedded into the container allows for proper grounding.

Steel & Poly Shelf Cans have a faucet mounted 2-in (51-mm) above the bottom to eliminate the need to lift the cans during dispensing.

Steel Tilt Cans have a faucet on top and the can rests in a sturdy metal cradle. Cradle base measures 13-13/16 x 14-in (351-mm x 356-mm).

All styles are FM-approved.



Need to dispense from a can stored in a safety cabinet?

Visit our website and search for model no. 29943—a shorter shelf for easy dispensing.

Global Protection

Justrite products are available worldwide. For pricing and availability, simply contact the authorized distributor nearest you.



Description and Capacity	Can Dimensions OD x H	Approv/Lstg Regulation	Red Can Model No	Yellow Can Model No	Ship Wt lb/kg	
2.5 gallon (9.5 L) steel safety shelf can with bottom faucet 08540	11.75 x 11.5 in 298 x 292 mm	FM	7225140	7225240	7/3	
2.5 gallon (9.5 L) steel safety shelf can with bottom faucet 08902			7225150	7225250		
5 gallon (19 L) steel safety shelf can with bottom faucet 08540	11.75 x 16.875 in 298 x 429 mm		7150140	7150240	8/4	
5 gallon (19 L) steel safety shelf can with bottom faucet 08902			7150150	7150250		
5 gallon (19 L) tilt steel safety can with top faucet 08540 and stand			11.75 x 15.875 in 298 x 403 mm	7150146	—	14/6
5 gallon (19 L) tilt steel safety can with top faucet 08902 and stand				7150156		
5 gallon (19 L) steel safety can with top faucet 08540	11.75 x 15.875 in 298 x 403 mm	7150147	14545	8/4		
5 gallon (19 L) steel safety can with top faucet 08902		7150157				
1 gallon (4 L) oval polyethylene safety shelf can with self-close stainless steel faucet 08919	7.25 x 11.5 in 184 x 292 mm	FM		14169	3/1	
5 gallon (19 L) polyethylene safety shelf can with self-close bottom faucet 08540	11.5 x 17 in 292 x 432 mm			14545	10/4	
5 gallon (19 L) polyethylene tilt safety can with self-close faucet 08540 and stand	11.5 x 17 in 292 x 432 mm			14535	16/7	
5 gallon (19 L) polyethylene safety can with self-close top faucet 08540				14540	10/4	

Squeeze Bottles

Squeeze bottles made of polyethylene with a stainless steel wire, provide safe dispensing of flammable liquids directly on small components or subassemblies with a minimum of over-spray. Squeezing the bottle produces a fine stream of liquid. Stem can be shaped to dispense into hard-to-get areas. Squeeze bottles are intended for daily use only.



Simply squeeze bottle to target liquid directly onto cleaning cloths or parts.

Store partially filled squeeze bottles in a closed container...

Visit our website and search for model no. 27705 mixing tank. It holds nine 16 oz. or seven 32 oz. squeeze bottles.



Description and Capacity	Dimension OD x H	Model No	Ship Wt lb/kg
1 pint (0.5 L) polyethylene squeeze bottle with flexible dispensing tube, translucent	3 x 7.5 in 76 x 191 mm	14009	2/1
1 quart (1 L) polyethylene squeeze bottle with flexible dispensing tube, translucent	3.5 x 9.125 in 89 x 232 mm	14011	

Bottle Jacket

Two-piece bottle jacket provides added protection of a polyethylene cover around chemical glass bottles. Jacket acts as a shock absorber to minimize breakage and spills due to bumps or falls. One-gallon (4-liter) bottle fits into the bottom half of the jacket and lid twists on securely for safe pouring. Translucent color aids in detecting liquid level.



Description and Capacity	Dimension OD x H	Model No	Ship Wt lb/kg
Translucent polyethylene bottle jacket for 1 gallon (4 L) bottles	6 x 14 in 152 x 356 mm	12009	1/1

Self-Closing Containers for Non-flammable Corrosives

Improve safety and ensure containment with secure laboratory containers

Translucent high-density polyethylene resists acids and caustics. The 2- to 5-gallon (7.5- to 19-L) sizes have fixed position on handle, which allows lid to stay open for easy filling. Spring-close cap provides a tight seal. Flame arrester-free spout allows quick pouring of non-flammable corrosives. Oval containers have trigger handle for one-handed pouring and make the most of storage capacity.



12260

12762

12161

Description and Capacity	Dimensions OD x H	Dimensions Spout Dia	Model No	Ship Wt lb/kg
1 gallon (4 L) oval polyethylene container with stainless steel hardware	4.625 x 7.625 x 12.75 in 117 x 194 x 324 mm	1.45 in 37 mm	12161	2/1
2 gallon (7.5 L) wide mouth polyethylene container with stainless steel hardware	12 x 14.75 in 305 x 375 mm	3.625 in 92 mm	12762	
2.5 gallon (9.5 L) polyethylene container with stainless steel hardware	10.75 x 15.25 in 273 x 387 mm	1.45 in 37 mm	12260	7/3
5 gallon (19 L) wide mouth polyethylene container with stainless steel hardware	12 x 20 in 305 x 508 mm	3.625 in 92 mm	12765	
				9/4



Manifold kit provides a convenient, cost effective way to collect waste from multiple HPLC machines.

HPLC Safety Disposal Cans

Quick-disconnect fittings and coalescing carbon filters keep laboratory and personnel safe with a compliant, environmentally-friendly solution to waste collection

Ideal for HPLC waste applications:

- Vapor and fire protection
- Safeguard against accidental spills
- Maximize safety and convenience

Hands-free solvent collection: Solvent flows freely from your process into the container through tubing making it suitable for either pump-fed or gravity-flow HPLC waste methods. Two disconnect fittings, one intake and one vent, eliminate back pressure in liquid flow disposal line and provide controlled handling of vapor.

Durability and safety: Translucent polyethylene container allows quick visual inspection of liquid level. Pouring spout is equipped with a stainless steel flame arrester, which reliably dissipates heat to prevent flashback ignition. Spring-loaded, sealed lid automatically vents to guard against explosion. Control odors with a coalescing/carbon filter.

Quick-Disconnect system: Easy-on, easy-off mechanism offers detachment of the can from the process without leaks, drips or vapor release. Once disconnected, the container is automatically sealed to prevent spills.



Global Protection
Justrite products are available worldwide. For pricing and availability, simply contact the authorized distributor nearest you.

Coalescing carbon filter
Optional filters are for use with only round style cans.

Optional manifold

Valved quick-disconnect fittings automatically close when decoupled to prevent vapor or liquid release.

Translucent color lets you check liquid level at a glance.

Oval-style maximizes storage space and features one-handed pouring from narrow 1-7/16-in (36-mm) spout.

Stainless-steel fittings offer PTFE O-rings on standard containers. Also available with EPDM or Viton O-ring seals on customized cans.

Easy-carrying handle with fixed position latch keeps spring loaded cover open for convenient pouring during disposal.

Economically priced polypropylene barbed fittings offer EPDM O-rings.

Large 3-5/8-in (92-mm) opening facilitates controlled pouring into larger vessels for proper hazardous waste disposal. Spout is equipped with a stainless steel flame arrester.

Meets OSHA, NFPA and EPA requirements.

Create custom cans, with up to eight ports, for multiple HPLC units. See our custom-can form online at justritemfg.com



Capacity	Dimensions OD x H	Fitting No 1 for Liquid Intake			Fitting No 2 for Vapor Release			Model No	Ship Wt lb/kg	
		Material	O-Ring	Tubing* Size ID	Material	O-Ring	Tubing* Size ID			
1 gallon (4 L) oval can	7.75 x 5.25 x 12.75 in 197 x 133 x 324 mm	Polypropylene	EPDM	0.375 in 10 mm	Polypropylene	EPDM	0.375 in 10 mm	12160	2/1	
2 gallon (7.5 L) round can	12 x 14.75 in 305 x 375 mm	Stainless Steel	PTFE		Stainless Steel	PTFE		7/3	TF12752	11/5
2 gallon (7.5 L) round can		Polypropylene	EPDM		Polypropylene	EPDM				
5 gallon (19 L) round can	12 x 20 in 305 x 508 mm	Stainless Steel	PTFE		Stainless Steel	PTFE		TF12755		
5 gallon (19 L) round can		Polypropylene	EPDM	Polypropylene	EPDM	BY12755				
5 gallon (19 L) round can with faucet no. 08916		Stainless Steel	PTFE	0.25 in 6 mm	Stainless Steel	PTFE	0.25 in 6 mm	12770	12/6	
5 gallon (19 L) round can with faucet no. 08916				0.375 in 10 mm			0.375 in 10 mm	12771		

* Tubing not supplied with containers.



Coalescing Carbon Filters

Use with HPLC cans to minimize odor, and capture 99% of liquid particulates released in the form of gaseous vapor. Vent filter snaps conveniently into the quick-disconnect fitting. Carbon filter cartridge color indicator beads (top portion) changes from purple to black to indicate when replacement is necessary. Replace the coalescing filter (bottom portion) after three or four carbon filter cycles. Use filters with all 2-gallon (7.5-L), 5-gallon (19-L) and custom-built quick-disconnect cans; not for use with oval style can. Meets EPA 40 CFR 264.173.



Filter Replacement Window



28161

28162

Description	Attachment/Use With	Model No	Ship Wt lb/kg
Coalescing/carbon filter combo with stainless steel fittings	Disconnect cans with stainless steel fittings	28162	2/1
Coalescing/carbon filter combo with polypropylene fittings	Disconnect cans with polypropylene fittings	28161	

Carbon Filter Replacements

Description	Attachment/Use With	Model No	Ship Wt lb/kg
Colormetric/carbon filter 3-Pack replacements	28162 or 28161 Coalescing/carbon filter	28157	2/1

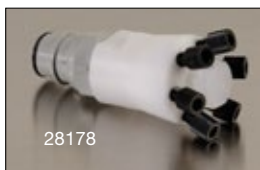
NOTE: When using HPLC carbon filter with FM approved Justrite safety disposal can, the Justrite safety disposal container has not been FM approved or tested in assembly with the HPLC filter attached. However, the container does comply with US OSHA 1910 and NFPA Code 30 requirements, both with and without the HPLC filter. Do not transport safety container while carbon filter is attached.



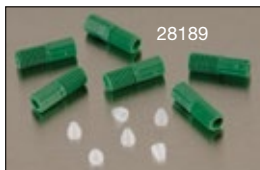
28157

HPLC PTFE Manifold and Compression Fittings

Enables up to six waste lines (per manifold) from HPLC processes to be fed into a single intake fitting. Safety container with manifold installed is OSHA compliant and meets NFPA Code 30. Use on round containers; not for use on oval style can.



28178



28189



Manifold no. 28177 with stacker no. 28179 and tubing connector package nos. 28188 and 28189.

Description	Attachment/Use With	Model No	Ship Wt lb/kg
PTFE manifold with stainless steel fitting	Containers with stainless steel fittings	28177	2/1
PTFE manifold with polypropylene fitting	Containers with polypropylene fittings	28178	
PTFE manifold with stainless "stacker" connector	28177 or 28178	28179	
OD 0.0625 in hard wall ETFE tubing compression fittings with ferrules (package of six - blue)		28188	
OD 0.125 in hard wall ETFE tubing compression fittings with ferrules (package of six - green)		28189	
OD 2 mm hard wall ETFE tubing compression fittings with ferrules (package of six - yellow)		28121	
OD 2.5 mm hard wall ETFE tubing compression fittings with ferrules (package of six - orange)		28122	
OD 3 mm hard wall ETFE tubing compression fittings with ferrules (package of six - red)		28123	

Polytetrafluoroethylene (PTFE) is a synthetic fluoropolymer. Ethylene tetrafluoroethylene (ETFE) is a fluorine based plastic.



84003 with TF12755

Spill Basin

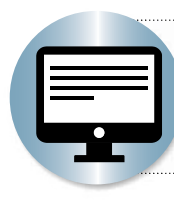
Durable polyethylene basin keeps work area clean around HPLC cans and captures any inadvertent leakage from HPLC inflow tubes.

Description	Dimensions W x L X H	Model No	Ship Wt lb/kg
5 gallon (19 L)	14.875 x 14.875 x 7.625 379 x 379 x 194 mm	84003	4/2



Need a stainless steel manifold?

For containers with stainless steel fittings, use a stainless steel manifold that accepts 4 waste lines. Visit our website and search model no. 28168.



Custom made safety disposal cans . . .

Design your own 2- or 5-gallon can with up to 8 fittings. Visit our website and search on "custom HPLC."



Large opening with cap held open provides convenient filling and pouring.

Liquid Disposal Safety Cans

A better solution for the containment of liquid flammable or corrosive waste

- Durable poly in safety red or translucent white to easily detect liquid level.
- Current-carrying, patented carbon insert embedded in the container allows for proper grounding.

High-density polyethylene (HDPE) disposal cans provide superior chemical resistance and leak protection. Spring-loaded sealed cap, normally closed, automatically vents between 3 and 5 psig (0.2 and 0.35 bar). Stainless steel handle and hardware with latch-catch system hold the cap in the open position for easy filling and pouring. Large-mouth opening features a built-in stainless steel flame arrester to guard against outside ignition. The broad-base design provides stability and resists accidental tip over.

Model numbers 14265 and 14565 with built-in polyethylene fill gauge indicator pops up to warn you that the container is almost full.



Description and Capacity	Dimensions OD x H	Approv/Lstg Regulation	Red Model No	White Model No	Ship Wt lb/kg
2 gallon (7.5 L) polyethylene can with stainless steel hardware with 08530 fill gauge built-in	12 x 14.75 in 305 x 375 mm	—	14265	—	7/3
2 gallon (7.5 L) polyethylene can with stainless steel hardware	12 x 20 in 305 x 508 mm	FM	14762	12751	11/5
5 gallon (19 L) polyethylene can with stainless steel hardware			14765	12754	
5 gallon (19 L) polyethylene can with stainless steel hardware with 08530 fill gauge built-in			14565	—	
5 gallon (19 L) polyethylene can with stainless steel hardware and faucet	—	—	—	12772	12/6
Replacement flame arrester, stainless steel	—	—	11406	11406	2/1



Global Protection

Justrite products are available worldwide. For pricing and availability, simply contact the authorized distributor nearest you.

Countertop Lab Tray

Polyethylene tray catches drips or spills and keeps counter clean and uncontaminated. Slightly curved edge and ribbed bottom keeps containers from sitting in pooled liquid.

Description	Nominal Dimensions L x D	Model No	Ship Wt lb/kg
Countertop lab tray	31.125 x 18.5 in 791 x 470 mm	29965	4/2



Drain Cans

Safely collect waste liquids from parts washing equipment with a drain can featuring a wide-mouth, 8-7/8-in (225-mm) plated steel funnel that catches drainage with no spills or mess. The funnel has a built-in flame arrester that protects liquid contents from ignition sources. A 3/4-in (19-mm) threaded plug permits disposal of waste liquids into a permanent receptacle. Funnel removes for easy cleaning. Optional drain can cover fits on funnel top to keep dirt out.



Position drain cans under rinse tanks to safely collect used solvents.



Description and Capacity	Dimensions OD x H	Approv/Lstg Regulation	Model No	Ship Wt lb/kg
3 gallon (11 L) steel drain can	11.625 x 12.25 in 295 x 311 mm	FM	10903	7/3
5 gallon (19 L) steel drain can	11.625 x 16.75 in 295 x 425 mm		10905	8/4
Optional drain can cover fits both sizes			11176	2/1

Biohazard Waste Cans

Safe, temporary collection of biological waste

- Meets OSHA 29 CFR1910.1030 for the segregation of infectious waste.
- Perfect for medical facilities and research laboratories.

Safely store contaminated laundry and other regulated waste (except sharps) in sturdy, leakproof steel cans with automatic, self-closing lid. Easy foot pedal operation opens the container to dispose of biohazard waste, and closes upon pedal release to reduce the risk of contamination. Can comes with one biohazard bag that fits around the circumference of the can top—optional model number 05901 includes a roll of 100 liner bags. Optional label kit number 25880 includes three additional biohazard labels for visibility from all sides to comply to California Health and Safety Code 118280.

To lessen disruptive closure noise in quiet environments, use SoundGard™ models which incorporate a muffling pad inside the lid—reducing noise by approximately 200% over standard models.



Foot pedal offers hands-free opening to reduce the risk of contamination.



Description and Capacity	Dimensions OD x H	Approv/Lstg Regulation	White Model No	Red Model No	SoundGard™ White Model No	SoundGard™ Silver Model No	Ship Wt lb/kg
6 gallon (20 L) biohazard can	11.875 x 15.875 in 302 x 403 mm	FM, TÜV	05910	05910R	05915	05914	10/5
10 gallon (34 L) biohazard can	13.937 x 18.25 in 354 x 464 mm		05930	05930R	05935	05934	13/6
100 red liner bags, 11 microns thick	33 x 24 in 838 x 610 mm	—	05901				2/1
Code compliant label kit for California (three labels and instructions)			25880				1/1



Foot pedal provides hands-free opening. When released, cover self-closes to reduce oxygen source and prevent a fire from starting.

Oily Waste Cans

Dispose of oil-soaked rags and prevent fires caused by stray sparks or spontaneous combustion

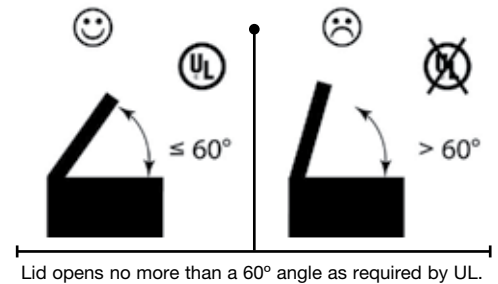
Rags and cloths soaked with solvents, thinners, linseed oil, combustible adhesives and other flammable liquids present a serious fire risk when improperly discarded. Lid opens to no more than 60 degrees and stays closed when not in use, isolating contents from fire sources and limiting oxygen to virtually eliminate the risk of spontaneous combustion. Round construction and elevated base allow circulation of air around can to disperse heat and reduce moisture build-up and rusting. Durable steel construction with a powder-coat finish provides chemical resistance. Approved by FM, UL, and TÜV. All cans carry a ten-year warranty.



Global Protection
Justrite products are available worldwide. For pricing and availability, simply contact the authorized distributor nearest you.



1. Swinging carry handle for portability
2. Warning label with pictographs reduces miscommunication
3. Leakproof design with elevated base provides air circulation to reduce rusting and disperses heat for added safety



Description and Nominal Gallon Capacity	Dimensions OD x H	Approv/Lstg Regulation	Red Model No		Ship Wt lb/kg
			Foot-Operated	Hand-Operated*	
2 gallon (8 L) oily waste can	9.625 x 9.125 in 244 x 232 mm	FM	—	09200	6/3
6 gallon (20 L) oily waste can	11.875 x 15.875 in 302 x 403 mm	FM,UL,TÜV	09100	09110	10/4
10 gallon (34 L) oily waste can	13.938 x 18.25 in 354 x 464 mm		09300	09310	13/6
14 gallon (52 L) oily waste can	16.063 x 20.25 in 408 x 514 mm		09500	09510	16/7
21 gallon (80 L) oily waste can	18.375 x 23.438 in 467 x 595 mm		09700	09710	22/10

*Hand-operated models do not have TÜV certification.

Oily Waste Cans—Optional Colors

Additional colors offer versatile waste collection

- Standard oily waste cans in yellow help differentiate waste materials.
- SoundGard™ style in silver or red lessens noise closure for quiet-working settings.

Use color identification to help segregate different types of waste rags and wipes or to differentiate multiple work shifts or departments. OSHA compliant colored oily waste cans protect your worksite from fires that can start from spontaneous combustion, sparks, or careless use of smoking materials. Foot-operated models offer hands-free opening, and gravity-close to reduce oxygen and prevent fire. Raised base allows air circulation to reduce moisture build-up and rusting, and disperses heat for added safety. Leakproof, durable steel construction with powder-coat finish for long life—backed by a ten-year warranty.

To lessen disruptive closure noise and provide a more comfortable working environment, use SoundGard™ models which incorporate a muffling pad inside the lid—reducing noise by approximately 200% over standard models.



Use quiet-closing SoundGard™ oily waste cans in environments where others are working close by.



Sound-muffling SoundGard™ lid significantly reduces noise closure.



09101



09104



Description and Nominal Gallon Capacity	Dimensions OD x H	Approv/Lstg Regulation	Standard Yellow Model No		Ship Wt lb/kg
			Foot-Operated	Hand-Operated*	
Standard Oily Waste Cans					
2 gallon (8 L) oily waste can	9.625 x 9.125 in 244 x 232 mm	FM	—	09200Y	6/3
6 gallon (20 L) oily waste can	11.875 x 15.875 in 302 x 403 mm	FM,UL,TÜV	09101	09111	10/4
10 gallon (34 L) oily waste can	13.938 x 18.25 in 354 x 464 mm		09301	09311	13/6
14 gallon (52 L) oily waste can	16.063 x 20.25 in 408 x 514 mm		09501	09511	16/7
21 gallon (80 L) oily waste can	18.375 x 23.438 in 467 x 595 mm		09701	09711	22/10

*Hand-operated models do not have TÜV certification.

Description and Nominal Gallon Capacity	Dimensions OD x H	Approv/Lstg Regulation	SoundGard™ Foot-Operated		Ship Wt lb/kg
			Red Model No	Silver Model No	
SoundGard™ Oily Waste Cans					
0.45 gallon (1.7 L) oily waste can	4.625 x 6.50 in 117 x 165 mm	FM	09410*	—	6/3
6 gallon (20 L) oily waste can	11.875 x 15.875 in 302 x 403 mm	FM,UL,TÜV	09108	09104	10/4
10 gallon (34 L) oily waste can	13.938 x 18.25 in 354 x 464 mm		09308	09304	13/6
14 gallon (52 L) oily waste can	16.063 x 20.25 in 408 x 514 mm		09508	09504	16/7
21 gallon (80 L) oily waste can	18.375 x 23.438 in 467 x 595 mm		09708	09704	22/10

*0.45 gal (1.7 L) is hand-operated.



High-visibility red finish provides increased awareness in the workplace.

Safety Drum Covers

Convert open-top 30- or 55-gallon (110- or 200-L) steel drums into safe waste receptacles

- Keep facilities protected against fires from combustible trash.
- FM-approved and TÜV certified.

Self-closing drum cover turns a drum into a fire-safe receptacle for combustible waste. Simply use a screwdriver and wrench to attach the cover to a drum. For added safety, a replaceable fusible-link assembly melts at 165°F (74°C) to automatically allow spring-loaded cover to slam shut if there is a fire in the drum.



Durable steel construction with powder-coat finish provides excellent chemical resistance. Fifty-five gallon (200-L) size fits drums from 22-1/2-in to 22-3/4-in (565- to 578-mm) in diameter. Thirty-gallon (110-L) size fits drums nominally 18-3/8-in (467-mm) in diameter.

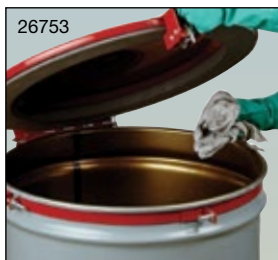


Description and Capacity	Approv/Lstg Regulation	Red Model No	Yellow Model No	Ship Wt lb/kg
Self-close drum cover with fusible link for 55 gallon (200 L) drums	FM,TÜV	26750	26751	15/7
Self-close drum cover with fusible link for 30 gallon (110 L) drums	FM,TÜV	26730	—	11/5
Open head 55-gallon (200 L) drum	—	26054	—	35/16

Note: Drum and cover purchased separately.



Manual latching lid with gasket and vent



Self-closing lid with gasket and vent



Manual latching lid with gasket, vent, and easy-access port

Safety Drum Lids with Vapor Control

Control hazardous vapors and reduce fire risks

- Meets EPA, NESAM, and OSHA requirements.
- Independently fire tested and approved by FM Approvals.

Control vapor and VOC emissions when disposing solvent-soaked rags with easy-to-attach, durable steel lids—require only a screwdriver and wrench to install on open-head 55-gallon (200-L) steel drums. All lids feature a gasket and vent to meet the National Emissions Standard for Aerospace Manufacturing (NESAM) 60 FR 45956 subpart GG 63.741. Safety vent relieves pressure build-up between 3 and 5 psig (0.2 and 0.35 bar) at elevated temperatures.

Model No. 26752 features a manual latching lid which accepts an optional padlock for security. **Model No. 26753** has a self-latching lid with a spring-loaded, rotary latch mechanism. It offers a greater degree of safety because when released, it automatically closes via gravity and then automatically latches to prevent the drum from being left open by mistake—eliminating the chance for oxygen to enter and start a fire. **Vapor-Trap™ model No. 26754** features a manual latching lid that accepts a padlock to minimize access to contents. An easy-access port allows quick discards of small containers such as used lubricants, motor oils and additives, and non-reusable cosmetics, skin products, and demonstration colognes used in retail settings.



Description and Capacity	Approv/Lstg Regulation	Model No	Ship Wt lb/kg
Manual latching lid for 55 gallon (200 L) drums	FM,TÜV,NESAM,EPA	26752	14/6
Self-latching lid for 55 gallon (200 L) drums	FM,TÜV,NESAM,EPA	26753	15/7
Manual latching VaporTrap™ lid with port for 55 gallon (200 L) drums	FM,TÜV,NESAM,EPA	26754	15/7
Open head 55-gallon (200 L) drum	—	26054	35/16

Note: Drum and lid purchased separately.

Cease-Fire® Waste Receptacles

The safe answer to waste paper and other solvent-free combustibles accumulation

- Brushed aluminum head models for easy cleaning and corrosion resistance.
- Durable steel head models with red powder-coat paint for abusive conditions.

Justrite's Cease-Fire® Waste Receptacles are specially contoured to direct smoke and gas from any fire inside the container, back into the combustion area, cutting off the air supply and extinguishing flames in seconds. Cease-Fire® receptacles provide around-the-clock protection against trash fires. Drum bodies are heavy gauge steel with a rust preventative interior coating. Drums should be filled ¾ full only. Most models carry both a UL Listing and FM-approval.



Unique contoured head smothers flames fast.



Position Cease-Fire® receptacles throughout your facility to keep it clean and protected against trash fires.



Three colors complement many settings. Suitable for:

- Industrial facilities
- Lobbies and entryways
- Hotels and restaurants
- Office buildings
- Lunchrooms
- Schools
- Hospitals
- Retail locations



Global Protection
Justrite products are available worldwide. For pricing and availability, simply contact the authorized distributor nearest you.



Description and Capacity	Opening Dia	Dimensions OD x H	Approv/Lstg Regulation	Gray Model No	Black Model No	White Model No	Ship Wt lb/kg
4.5 gallon (17 L) drum with aluminum head	5 in (127 mm)	12.125 x 14.25 in (308 x 362 mm)	FM, UL	26604G	26604K	26604W	6/3
6 gallon (23 L) drum with aluminum head		12.125 x 16.75 in (308 x 425 mm)		26606G	26606K	26606W	
12 gallon (45 L) drum with aluminum head	5.25 in (133 mm)	15.125 x 21 in (384 x 533 mm)		26612G	26612K	26612W	10/5
15 gallon (57 L) drum with aluminum head		15.125 x 25.75 in (384 x 654 mm)		26615G	26615K	26615W	12/6
30 gallon (110 L) drum with aluminum head	7 in (179 mm)	19.875 x 29.75 in (505 x 756 mm)		26630G	26630K	26630W	26/12
55 gallon (200 L) drum with aluminum head	7.875 in (200 mm)	24 x 35.5 in (610 x 902 mm)		FM	26655G	26655K	26655W
12 gallon (45 L) drum with heavy-duty steel head	5.25 in (133 mm)	14.5 x 21 in (368 x 533 mm)	FM, UL	26412	-	-	11/5
15 gallon (57 L) drum with heavy-duty steel head		14.5 x 25.75 in (368 x 654 mm)		26415			13/6
30 gallon (110 L) drum with heavy-duty steel head		19.25 x 29.75 in (489 x 756 mm)		26430			28/13
55 gallon (200 L) drum with heavy-duty steel head		23.75 x 35.5 in (603 x 902 mm)	26455	43/20			



Efficiently wet wipes with a simple pump action.

Safety Plunger Cans

Moisten cleaning cloths quickly and easily—smart-pump brings more liquid to the top and requires less time between refills

- Rugged 24-gauge steel cans with powder-coat finish for chemical resistance.
- High-density polyethylene container option for greater corrosion resistance.
- Approved by FM Approvals and TÜV.

Dispense flammable liquids and solvents safely, without waste or exposure. Made of chemically resistant Ryton® and brass, the pump base is designed to leave less liquid in the bottom before having to refill.

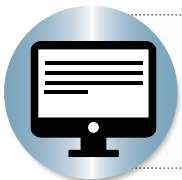
Pushing down on the pump assembly fills the upper perforated pan with liquid. Surplus liquid drains safely back into reservoir. The perforated upper pan serves as a flame arrester. Top rim has molded edge protector for smooth, trouble-free moistening.



Perforated dasher dissipates heat.



Global Protection
Justrite products are available worldwide. For pricing and availability, simply contact the authorized distributor nearest you.



See how it works!

Visit our website and search "plunger can video" or subscribe to our YouTube channel to be notified each time new content is added.



Description and Capacity	Dasher Assembly	Smart-Pump Assembly	Dasher Dia	Dimension OD x H	Approv/Lstg Regulation	Red Model No	Yellow Model No	Ship Wt lb/kg
1 pint (0.5 L) steel plunger can	steel	brass & Ryton®	2.75 in (70 mm)	4.875 x 5.25 in 124 x 133 mm	FM, TÜV	10008	10018	1/1
1 quart (1 L) steel plunger can				7.25 x 5.625 in 184 x 143 mm		10108	10118	3/1
2 quart (2 L) steel plunger can			5 in (128 mm)	7.25 x 7.875 in 184 x 200 mm		10208	10218	
1 gallon (4 L) steel plunger can				7.25 x 10.5 in 184 x 267 mm		10308	10318	
1 quart (1 L) polyethylene plunger can	brass			5.5 x 8.25 in 140 x 210 mm		14018	-	2/1

Ryton® is a registered trademark of Chevron Phillips Chemical Company.

Safety Bench Cans

Simple downward push soaks parts in solvent for easy cleaning

- Durable 24-gauge steel with powder-coat finish for chemical resistance.
- Flash-arresting plated steel dasher plate for safety.
- All styles FM-approved—most certified by TÜV.

Bench cans offer an easy means of cleaning small parts in solvent. Simply place work on spring-loaded, perforated dasher plate, press down and agitate, then release to return dasher to drain position. Plated steel dasher also works as an effective flame arrester to reduce the risk of fire flashback. Hinged cover minimizes evaporation losses and protected rim reduces the possibility of hand injury. Model number 10471 swab pail functions like a bench can for sponging operations—includes a bail handle for easy portability. Model number 09400 bench top solvent can with spring-loaded lid self-closes after each use for vapor retention to meet the National Emissions Standard for Aerospace Manufacturing (NESAM) and EPA regulations—accepts long cotton tipped applicators.



Clean small parts by pushing down dasher plate and agitate in cleaning solvent.



Description and Capacity	Dasher Dia	Dimension OD x H	Approv/Lstg Regulation	Red Model No	Yellow Model No	Ship Wt lb/kg
1 quart (1 L) steel bench can	4.5 in (114 mm)	4.875 x 5.5 in (124 x 140 mm)	FM, TÜV	10175	10171	2/1
2 quart (2 L) steel bench can	7.5 in (191 mm)	9.375 x 3.25 in (238 x 83 mm)		10295	10291	4/2
1 gallon (4 L) steel bench can		9.375 x 4.5 in (238 x 114 mm)		10375	10385	5/2
1 gallon (4 L) steel bench can with parts basket		11.5 x 5.875 in (292 x 149 mm)		10370	10380	
2 gallon (8 L) steel bench can		9.75 in (248 mm)		13.5 x 6 in (343 x 152 mm)	10575	10578
3 gallon (11 L) steel bench can with parts basket	12.125 in (308 mm)	7 x 10.5 in (178 x 267 mm)		10775	—	10/4
0.45 gallon (2 L) bench top solvent can			FM, NESAM, EPA	09400		4/2
6 quart (6 L) steel swab pail	7.5 in (191 mm)	9.375 x 7.5 in (238 x 191 mm)	FM	10471		6/3
Optional basket for bench cans 1 gallon (4 L) and larger		6.4375 x .4375 in (164 x 11 mm)	—	11171		1/1

Safety Dispenser Cans

Safe, convenient way to release small amounts of liquid

Dispensing cans permit easy, one-hand dispensing of liquids directly onto work surface or into lab beaker. Leakproof, self-closing, brass dispenser valve minimizes spills and controls excess. FM-approved brass valves are ideal for use with flammables. Textured, high-density polyethylene body provides a firm grip.



14010 / 14004



Description and Capacity	Dimension OD x H	Spout Opening ID	Approv/Lstg Regulation	Model No	Ship Wt lb/kg
4 ounce (0.12 L) polyethylene dispenser can, translucent	2.25 x 5.5 in (57 x 140 mm)	0.25 in (6 mm)	FM	14002	1/1
8 ounce (0.24 L) polyethylene dispenser can, red	3.125 x 5.5 in (79 x 140 mm)			14004	
8 ounce (0.24 L) polyethylene dispenser can, translucent				14005	
1 quart (1 L) polyethylene dispenser can, red	4 x 10.5 in (102 x 267 mm)			14010	
1 quart (1 L) polyethylene dispenser can, translucent		14012			



Clean small parts by immersing basket into solvent.

Safety Cleaning Tanks

Dip tanks and wash tanks are a safe, portable solution to parts cleaning

- Dip tanks for singular, larger piece parts.
- Wash tanks include basket for cleaning multiple small parts.
- Tanks and baskets are made from sturdy, 24-gauge coated steel with powder-coat finish for chemical resistance.

Use for cleaning parts and subassemblies where the volume of work does not warrant a larger rinse tank. Portable size accommodates changing production requirements. Tank cover stays open for convenient access; self-closing mechanism and fusible link melts at 165°F (74°C) to snap the cover shut in case of fire. Models with a high-density polyethylene liner offer outstanding chemical resistance to permit use with harsh, corrosive chemicals. Liner is removable and easy-to-clean.

Dip tank capacities range from 1-gallon (4-liter) to 8-gallon (30-liter) to accommodate a variety of part sizes. Wash tanks are sized exactly like the dip tanks, and they include a parts basket to facilitate washing multiple small parts quickly. Basket handle reduces hand contact with the cleaning solvent. Because liquid volume is displaced when the basket is lowered into the wash tank, stated capacity is lower than the dip tank counterpart. After cleaning operation is complete, lift basket to tank top and rest side handles into inside indents to allow solvent to drain before removal. Keep tanks closed when not in use.



Global Protection
Justrite products are available worldwide. For pricing and availability, simply contact the authorized distributor nearest you.

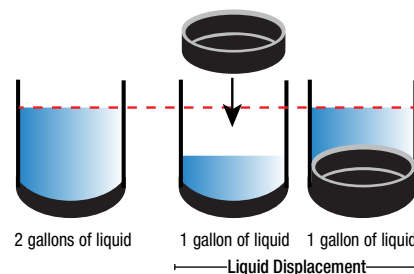


Description and Capacity	Dimension OD x H	Approv/Lstg Regulation	Red Model No	Yellow Model No	Ship Wt lb/kg	
Dip Tanks						
1 gallon (4 L) steel dip tank	9.375 x 5.5 in (238 x 140 mm)	FM, TÜV	27601	27611	4/2	
2 gallon (8 L) steel dip tank	9.375 x 10 in (238 x 254 mm)		27602	27612	7/3	
3.5 gallon (13 L) steel dip tank	11.375 x 11.25 in (289 x 286 mm)		27603	27613	8/4	
5 gallon (19 L) steel dip tank	13.75 x 13 in (349 x 330 mm)		27605	27606	11/5	
5 gallon (19 L) steel dip tank with HDPE liner			27615	27616		
8 gallon (30 L) steel dip tank			15.625 x 14.25 in (397 x 362 mm)	27608		27618
Wash Tanks						
1 gallon (4 L) steel wash tank with basket	9.375 x 10 in (238 x 254 mm)		FM, TÜV	27711	27811	7/3
2 gallon (8 L) steel wash tank with basket	11.375 x 11.25 in (289 x 286 mm)	27712		27812	10/4	
3.5 gallon (13 L) steel wash tank with basket	13.75 x 13 in (349 x 330 mm)	27713		27813	12/6	
3.5 gallon (13 L) steel wash tank with HDPE liner and basket		27723		27724	13/6	
6 gallon (23 L) steel wash tank with basket		15.625 x 14.25 in (397 x 362 mm)		27716	27816	15/7

Accessory parts basket simplifies cleaning small parts.

Note: Tank sizes for dip and wash tanks are the exact same; however, liquid capacity differs when using a parts basket because the liquid volume is displaced by the basket.

Parts Basket Model No	Fits Tank Size (D x H)	Dip Tank		Wash Tank	
		Model No	Capacity	Model No	Capacity
—	9.375 x 5.5 in (238 x 140 mm)	27601	1 gallon (4 L)	—	—
27901	9.375 x 10 in (238 x 254 mm)	27602	2 gallon (8 L)	27711	1 gallon (4 L)
27902	11.375 x 11.25 in (289 x 286 mm)	27603	3.5 gallon (13 L)	27712	2 gallon (8 L)
27903	13.75 x 13 in (349 x 330 mm)	27605	5 gallon (19 L)	27713	3.5 gallon (13 L)
27923	13.75 x 13 in (349 x 330 mm)	27615	5 gallon (19 L)	27723	3.5 gallon (13 L)
27906	15.625 x 14.25 in (397 x 362 mm)	27608	8 gallon (30 L)	27716	6 gallon (23 L)



Safety Rinse Tanks

Easily clean large parts with big capacity rinse tanks

- Generously sized to immerse parts 16-in deep x 35-in wide (406 x 889-mm).
- Durable 18-gauge (1-mm) steel with powder-coat finish for excellent chemical resistance.
- All chambers feature a 3/4-in (19-mm) drain plug for easy solvent replacement.

Floor standing rinse tanks are supported on a sturdy stand and offer a convenient working height of 32-3/4-in (832-mm). Self-closing cover is opened by stepping on a long foot-operated treadle, leaving both hands free to position and clean parts. When treadle is released, an adjustable-rate pneumatic cylinder prevents the cover from slamming shut to protect against hand injury.

Use **benchtop style rinse tanks** for easy point-of-use access on workbenches or counters. Lift-and-latch style cover includes a fusible link that melts at 165°F (74°C) to automatically close the cover under fire conditions.

Twin chamber rinse tanks are evenly divided between right and left sections to permit cleaning heavy grime on one side, and a using a clean solvent rinse on the other side. They feature the same protective, self-closing cover as found on the floor standing models.



Stepping on foot treadle opens the rinse tank cover, leaving hands free for cleaning.



27220



27110



27260



27311

Need a tank for mixing hazardous liquids?

Use a tank with removable lid. Lid features a spout that auto vents and flame arrester for safety. Visit our website and search on model no. 27705 to learn more.



Floor Standing and Benchtop Rinse Tanks



Description and Capacity	Tank Dimensions W x D x H	Overall Height	Approv/Lstg Regulation	Red Model No	Yellow Model No	Ship Wt lb/kg
11 gallon (42 L) steel floor standing rinse tank	24 x 16 x 8.75 in	32.75 in (832 mm)	FM	27110		27/12
11 gallon (42 L) steel bench top rinse tank	610 x 406 x 222 mm	8.75 in (222 mm)		27311	—	13/6
22 gallon (83 L) steel floor standing rinse tank	35.25 x 16 x 12 in	32.75 in (832 mm)		27220	27221	36/16
22 gallon (83 L) steel bench top rinse tank	895 x 406 x 305 mm	12 in (305 mm)		27322	—	22/10

Twin Chamber Rinse Tanks



Description and Capacity	Tank Dimensions W x D x H	Overall Height	Approv/Lstg Regulation	Red Model No	Ship Wt lb/kg
2 x 4 gallon (8 x 15 L) steel floor standing rinse tank	24 x 16 x 8.75 in 610 x 406 x 222 mm	32.75 in (832 mm)	FM	27140	28/13
2 x 9 gallon (8 x 34 L) steel floor standing rinse tank	35.25 x 16 x 12 in 895 x 406 x 305 mm			27260	36/16

Accessories

Description	Dimensions: L x W x D	Model No	Ship Wt lb/kg
Sediment screen for rinse tank models 27110, 27311	23 x 13.75 x 0.75 in (584 x 349 x 19 mm)	27004	1/1
Sediment screen for rinse tank models 27220, 27221, 27322	35 x 13.75 x 0.75 in (889 x 349 x 19 mm)	27006	
Parts basket for rinse tank models 27110, 27311	16 x 13 x 4 in (406 x 330 x 102 mm)	27003	2/1
Parts basket for rinse tank models 27220, 27322	28 x 13 x 4 in (711 x 330 x 102 mm)	27005	